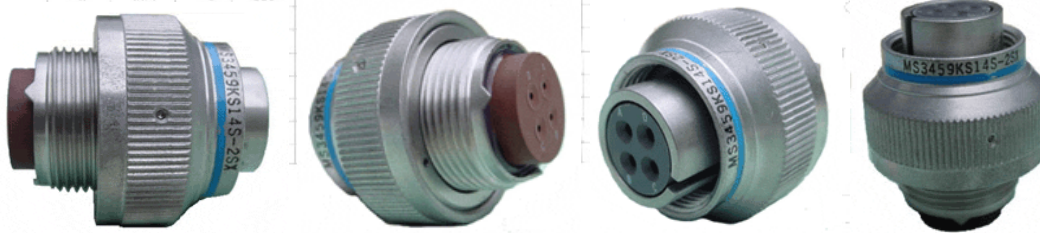




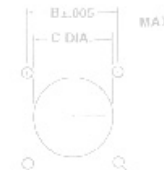
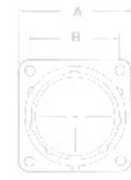
Allen Electric Connector Sales, Inc.



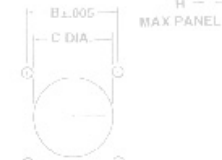
MS3459D SELF LOCKING PLUG, less coupling indicator



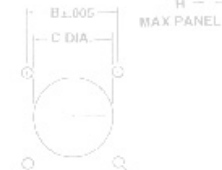
SHELL SIZE	A MAX	B ±.005	C ±.002	D ±.005
8	.828	.554	.568	.120
10	.954	.719	.585	.120
12	1.047	.812	.564	.120
14	1.141	.906	.969	.120
16	1.234	.986	1.115	.120
18	1.328	1.062	1.236	.120
20	1.418	1.150	1.365	.120
22	1.518	1.250	1.486	.120
24	1.708	1.375	1.615	.120



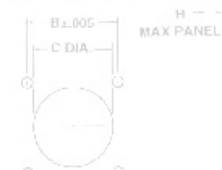
PANEL CUTOUT
D DIA
4 HOLES



PANEL CUTOUT
D DIA
4 HOLES



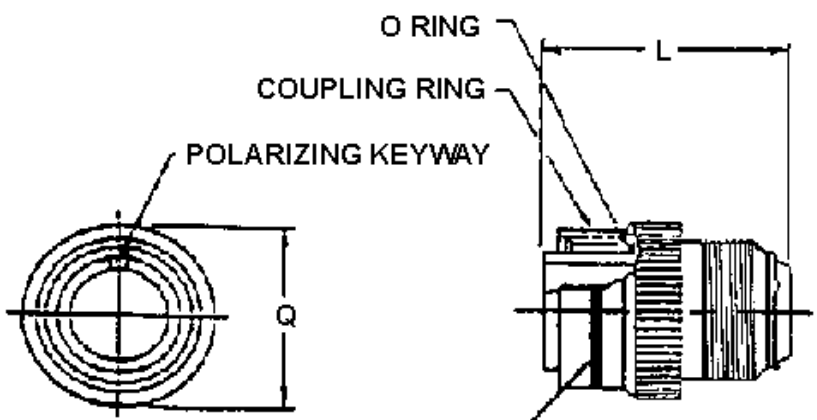
PANEL CUTOUT
D DIA
4 HOLES



SHELL SIZE	A MAX	B ±.005	C ±.002	D ±.005	E MAX	F ±.010	G MAX	H ±.010	J THREAD
8	.828	.554	.568	.120	1.213	.446	.052	.087	1/2-20 UNF
10	.954	.719	.585	.120	1.418	.446	.052	.087	3/8-24 UNF

SHELL SIZE	A MAX	B ±.005	C ±.002	D ±.005
8	.828	.554	.568	.120
10	.954	.719	.585	.120
12	1.047	.812	.564	.120
14	1.141	.906	.969	.120
16	1.234	.986	1.115	.120
18	1.328	1.062	1.236	.120
20	1.418	1.150	1.365	.120
22	1.518	1.250	1.486	.120
24	1.708	1.375	1.615	.120

SHELL SIZE	A MAX	B ±.005	C ±.002	D ±.005
8	.828	.554	.568	.120
10	.954	.719	.585	.120
12	1.047	.812	.564	.120
14	1.141	.906	.969	.120
16	1.234	.986	1.115	.120
18	1.328	1.062	1.236	.120
20	1.418	1.150	1.365	.120
22	1.518	1.250	1.486	.120
24	1.708	1.375	1.615	.120



SHELL SIZE	L MAX		Q MAX
	SIZE 16 & 12 CONTACTS	SIZE 0, 4 & 8 CONTACTS	
8S	2.031	-	.963
10S	2.031	-	1.088
10SL	2.031	.087	1.088
12S	2.031	.087	1.213
12	2.125	-	1.213
14S	2.031	.087	1.358
14	2.125	.087	1.358
16S	2.031	-	1.463
16	2.125	2.500	1.463
18	2.125	2.500	1.586
20	2.125	2.500	1.713
22	2.125	2.500	1.788
24	2.125	2.500	1.963
28	2.125	2.500	2.213
32	2.125	2.500	2.463
36	2.125	2.500	2.713

SHELL SIZE	A MAX	B ±.005	C ±.002	D ±.005
8	.828	.554	.568	.120
10	.954	.719	.585	.120
12	1.047	.812	.564	.120
14	1.141	.906	.969	.120
16	1.234	.986	1.115	.120
18	1.328	1.062	1.236	.120
20	1.418	1.150	1.365	.120
22	1.518	1.250	1.486	.120
24	1.708	1.375	1.615	.120

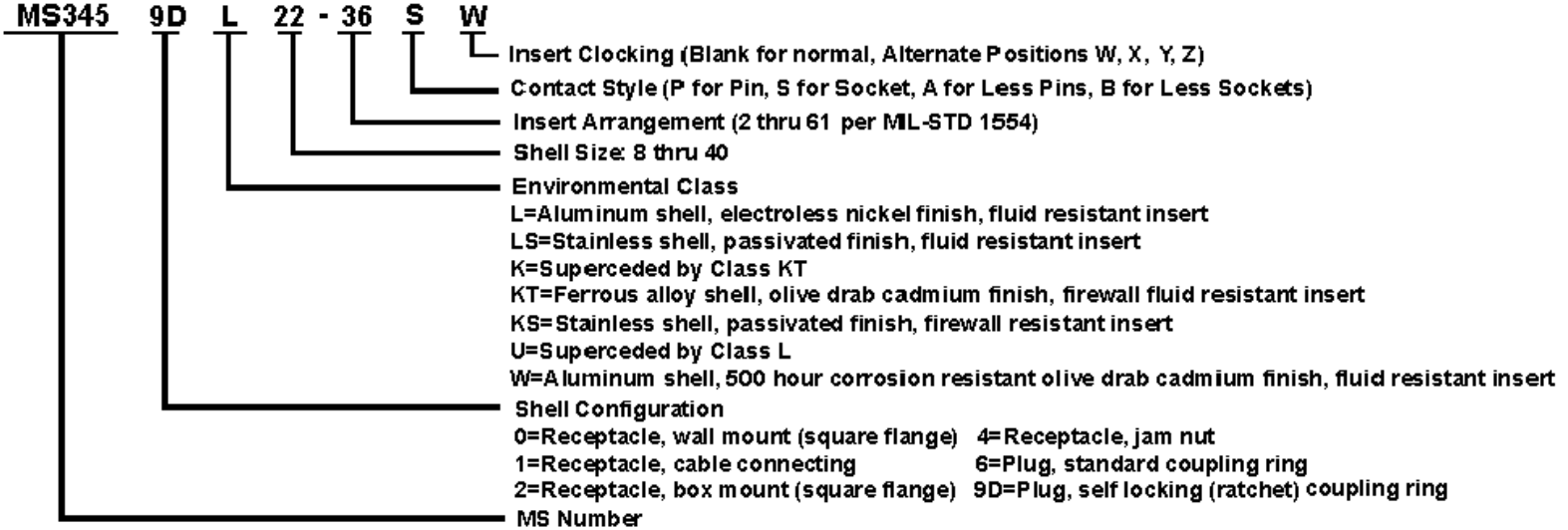
SHELL SIZE	A MAX	B ±.005	C ±.002	D ±.005
8	.828	.554	.568	.120
10	.954	.719	.585	.120
12	1.047	.812	.564	.120
14	1.141	.906	.969	.120
16	1.234	.986	1.115	.120
18	1.328	1.062	1.236	.120
20	1.418	1.150	1.365	.120
22	1.518	1.250	1.486	.120
24	1.708	1.375	1.615	.120

SHELL SIZE	A MAX	B ±.005	C ±.002	D ±.005
8	.828	.554	.568	.120
10	.954	.719	.585	.120

SHELL SIZE	A MAX	B ±.005	C ±.002	D ±.005
8	.828	.554	.568	.120
10	.954	.719	.585	.120

[MIL-DTL-5015 Insert Contacts, Service Rating & Clocking Positions](#)
[MIL-DTL-5015 Insert Arrangements](#)

MILITARY PART NUMBERING SYSTEM



For pricing and availability, please fill out our RFQ form



If you need any other information, please [E-Mail aecs@aecsinc.com](mailto:aecs@aecsinc.com)

phone (703) 425-3815 fax (703) 425-3814

We look forward to hearing from you!



A Woman Owned Small Business, CAGE Code 07BG6

Copyright © 2008 Allen Electric Connector Sales, Inc. All Rights Reserved.

40	2.125	2.500	2.963
----	-------	-------	-------

12	1.047	612	564	120
14	1.131	906	969	120
16	1.234	1062	1.115	120
18	1.338	1.092	1.236	120
20	1.443	1.150	1.365	120
22	1.578	1.550	1.486	120

8	828	554	568	120	1.215	446	092	087	1.230 U
10	954	719	585	120	1.215	446	092	087	2.924 U
12	1.047	812	565	120	1.215	446	092	087	1.230 U
14	1.131	906	565	120	1.215	446	092	087	1.230 U
16	1.234	1062	1.115	120	1.215	446	092	087	1.230 U
18	1.338	1.092	1.236	120	1.215	446	092	087	1.115-8 UNF
20	1.443	1.150	1.365	120	1.215	446	092	087	1.115-8 UNF
22	1.578	1.550	1.486	120	1.215	446	092	087	1.516-8 UNF
24	1.708	1.375	1.615	120	1.215	446	092	087	1.516-8 UNF

8	828	554	568	120	±.005	±.005
10	954	719	585	120	±.005	±.005
12	1.047	812	564	120	±.005	±.005
14	1.131	906	969	120	±.005	±.005
16	1.234	1062	1.115	120	±.005	±.005
18	1.338	1.092	1.236	120	±.005	±.005
20	1.443	1.150	1.365	120	±.005	±.005
22	1.578	1.550	1.486	120	±.005	±.005
24	1.708	1.375	1.615	120	±.005	±.005

