



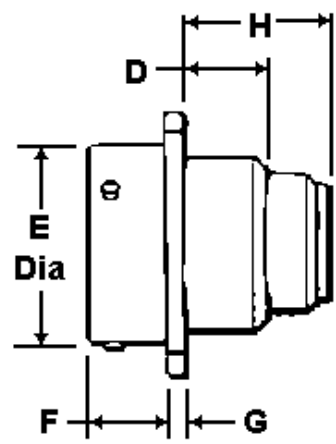
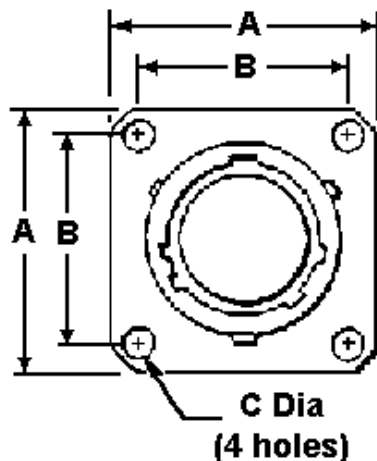
Allen Electric Connector Sales, Inc.



MS27513 SERIES II LONG GROMMET BOX MOUNT FLANGE RECEPTACLE

R	.628	.564	.568	.120	1.215	.446	.052	.087	5/32 UNF
10	.954	.719	.685	.120	1.215	.446	.052	.087	5/32 UNEF
12	1.047	.812	.664	.120	1.215	.446	.052	.087	3/4-20 UNEF

A	MAX
R	.628
10	.954
12	1.047
14	1.141
16	1.234
18	1.327
20	1.453
22	1.578
24	1.703



SHELL SIZE	A MAX		B NOMINAL		C NOM DIA		D MAX		E MAX DIA		F MAX		G MAX		H MAX	
	INCH	MM	INCH	MM	INCH	MM	INCH	MM	INCH	MM	INCH	MM	INCH	MM	INCH	MM
8	.827	21.00	.594	15.09	.120	3.05	.312	7.92	.474	12.04	.322	8.18	.069	13.11	.516	13.11
10	.953	24.20	.719	18.26	.120	3.05	.312	7.92	.591	15.01	.322	8.18	.069	13.11	.516	13.11
12	1.047	26.60	.812	20.62	.120	3.05	.312	7.92	.751	19.08	.322	8.18	.069	13.11	.516	13.11
14	1.141	28.58	.906	23.01	.120	3.05	.312	7.92	.876	22.25	.322	8.18	.069	13.11	.516	13.11
16	1.234	31.34	.969	24.61	.120	3.05	.312	7.92	1.001	25.43	.322	8.18	.069	13.11	.516	13.11
18	1.327	33.70	1.062	26.97	.120	3.05	.312	7.92	1.126	28.60	.322	8.18	.069	13.11	.516	13.11
20	1.453	36.90	1.156	29.36	.120	3.05	.312	7.92	1.251	31.78	.322	8.18	.069	13.11	.516	13.11
22	1.578	40.08	1.250	31.75	.120	3.05	.312	7.92	1.376	34.95	.322	8.18	.069	13.11	.516	13.11
24	1.703	43.26	1.375	34.93	.147	3.73	.312	7.92	1.501	38.13	.322	8.18	.069	13.11	.516	13.11

- [MIL-DTL-38999 Insert and Contact Identification](#)
- [MIL-DTL-38999 Insert Arrangements](#)
- [MIL-DTL-38999 Contacts, Tooling, Wire Sizes, Sealing Plugs](#)
- [Series II Polarization & Shell Keying](#)
- [Series II Panel Cut-Out Dimensions](#)
- [Series I & II Strain Reliefs](#)

MILITARY PART NUMBERING SYSTEM

MS27513

T

18

F

35

S

C

- Polarization (not required for normal)
- Contact Style (P for Pin, S for Socket)
- Insert Arrangement (Refer to MIL-C-38999 Insert Arrangements)
- Finish:
 - B= Aluminum, olive drab cadmium over nickel -65 C to +175C
 - C= Aluminum, Anodic (Non-Conductive) -65 C to +200 C
 - F= Aluminum, electroless nickel, -65 C to +200 C
- Shell Size: (even numbers only, 8 thru 24)
- Class:
 - T= Environmental with accessory threads and teeth (with exception of box mount version)
 - E= Environmental (box mount versions only)
- MS Number
 - MS27472= wall mount flange receptacle
 - MS27473= standard plug
 - MS27474= jam nut mount receptacle
 - MS27499= box mount receptacle
 - MS27508= box mount flange receptacle
 - MS27497= back panel wall mount receptacle
 - MS27484= RFI Plug
 - MS27513= box mount flange long grommet receptacle

For pricing and availability, please fill out our RFQ form



If you need any other information, please [E-Mail aecs@aecsinc.com](mailto:aecs@aecsinc.com)

phone (703) 425-3815 fax (703) 425-3814

We look forward to hearing from you!

SHELL SIZE	A MAX	B ±.005	C ±.005	D ±.005	E MAX	F ±.015	G ±.010	H (MAX)	J
8	.828	.564	.568	.120	1.215	.446	.062	.087	3/4-20 UNEF
10	1.047	.672	.664	.120	1.215	.446	.062	.087	7/8-20 UNEF
12	1.147	.906	.889	.120	1.215	.446	.062	.087	7/8-20 UNEF
14	1.147	.906	.889	.120	1.215	.446	.062	.087	7/8-20 UNEF
16	1.443	1.150	1.365	.120	1.275	.522	.094	.212	1 1/8-18 UNEF
20	1.578	1.250							1 1/8-18 UNEF
24	1.703	1.375							1 1/8-18 UNEF



A Woman Owned Small Business, CAGE Code 07BG6