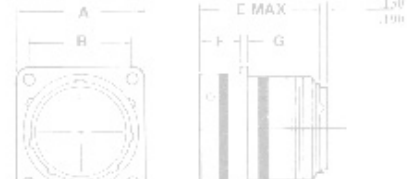


	INCH	MM	INCH	MM	INCH	MM	INCH	MM	INCH	MM	INCH	MM	INCH	MM	INCH	MM	INCH	MM
8	0.827	21.00	0.594	15.09	.120	3.05	.312	7.92	.474	12.04	.322	8.18	.069	1.75	.250	6.35	.447	11.35
10	0.953	24.2	0.719	18.26	.120	3.05	.312	7.92	.591	15.01	.322	8.18	.069	1.75	.250	6.35	.447	11.35
12	1.047	26.6	0.812	20.62	.120	3.05	.312	7.92	.751	19.08	.322	8.18	.069	1.75	.250	6.35	.447	11.35
14	1.141	28.98	0.906	23.01	.120	3.05	.312	7.92	.876	22.25	.322	8.18	.069	1.75	.250	6.35	.447	11.35
16	1.234	31.34	0.969	24.61	.120	3.05	.312	7.92	1.001	25.43	.322	8.18	.069	1.75	.250	6.35	.447	11.35
18	1.327	33.7	1.062	26.97	.120	3.05	.312	7.92	1.126	28.60	.322	8.18	.069	1.75	.250	6.35	.447	11.35
20	1.453	36.9	1.156	29.36	.120	3.05	.312	7.92	1.251	31.78	.322	8.18	.069	1.75	.250	6.35	.447	11.35
22	1.578	40.08	1.25	31.75	.120	3.05	.312	7.92	1.376	34.95	.322	8.18	.069	1.75	.250	6.35	.447	11.35
24	1.703	43.26	1.375	34.93	.147	3.73	.312	7.92	1.501	38.13	.322	8.18	.069	1.75	.250	6.35	.447	11.35

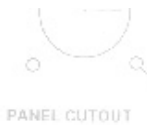
- [MIL-DTL-38999 Insert and Contact Identification](#)
- [MIL-DTL-38999 Insert Arrangements](#)
- [MIL-DTL-38999 Contacts, Tooling, Wire Sizes, Sealing Plugs](#)
- [Series II Polarization & Shell Keying](#)
- [Series II Panel Cut-Out Dimensions](#)
- [Series I & II Strain Reliefs](#)



MILITARY PART NUMBERING SYSTEM

MS27499 T 18 F 35 P B

- Polarization** (not required for normal)
- Contact Style** (P for Pin, S for Socket)
- Insert Arrangement** (Refer to MIL-C-38999 Insert Arrangements)
- Finish:**
 - B= Aluminum, olive drab cadmium over nickel -65 C to +175C**
 - C= Aluminum, Anodic (Non-Conductive) -65 C to +200 C**
 - F= Aluminum, electroless nickel, -65 C to +200 C**
- Shell Size:** (even numbers only, 8 thru 24)
- Class:**
 - T= Environmental with accessory threads and teeth (with exception of box mount version)**
 - E= Environmental (box mount versions only)**
- MS Number**
 - MS27472= wall mount flange receptacle**
 - MS27473= standard plug**
 - MS27474= jam nut mount receptacle**
 - MS27499= box mount receptacle**
 - MS27508= box mount flange receptacle**
 - MS27497= back panel wall mount receptacle**
 - MS27484= RFI Plug**
 - MS27513= box mount flange long grommet receptacle**



For pricing and availability, please fill out our RFQ form



8	820	554	568	120	1.275	446	652	687	1.5/16-18 UNF
10	954	719	685	120	1.275	446	652	687	5/8-24 UNF
12	1.047	812	664	120	1.275	446	652	687	3/4-20 UNF
14	1.141	866	1115	120	1.275	446	652	687	1.25 UNF
16	1.234	1002	1236	120	1.275	446	652	687	1 1/16-18 UNF
18	1.327	1062	1265	120	1.275	446	652	687	1 1/16-18 UNF
20	1.453	1150	1365	120	1.275	446	652	687	1 3/16-18 UNF
22	1.578	1250	1485	120	1.275	446	652	687	1 5/16-18 UNF
24	1.703	1375	1615	147	1.275	446	652	687	1 5/16-18 UNF



8	820
10	954
12	1.047
14	1.141
16	1.234
18	1.327
20	1.453
22	1.578
24	1.703

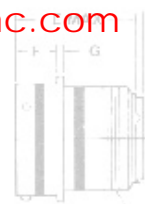


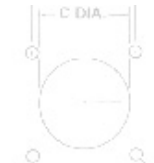
If you need any other information, please **E-Mail** aecs@aecsinc.com



phone (703) 425-3815 fax (703) 425-3814

We look forward to hearing from you!





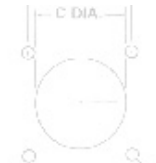
PANEL CUTOUT

D DIA.
4 HOLES

SHELL SIZE	A	B
8	820	554
10	954	719
12	1047	812
14	1141	906
16	1234	1000
18	1328	1094
20	1422	1188
22	1516	1282
24	1610	1376



J
E40-2A
20 UNF
14 UNEF
3/4-20 UNEF
28-20 UNF
1-20 UNEF
1 1/16-18 UNEF
1 5/16-18 UNEF
1 7/16-18 UNEF



PANEL CUTOUT

D DIA.
4 HOLES

A Woman Owned Small Business, CAGE Code 07BG6

Copyright © 2008 Allen Electric Connector Sales, Inc. All Rights Reserved.