

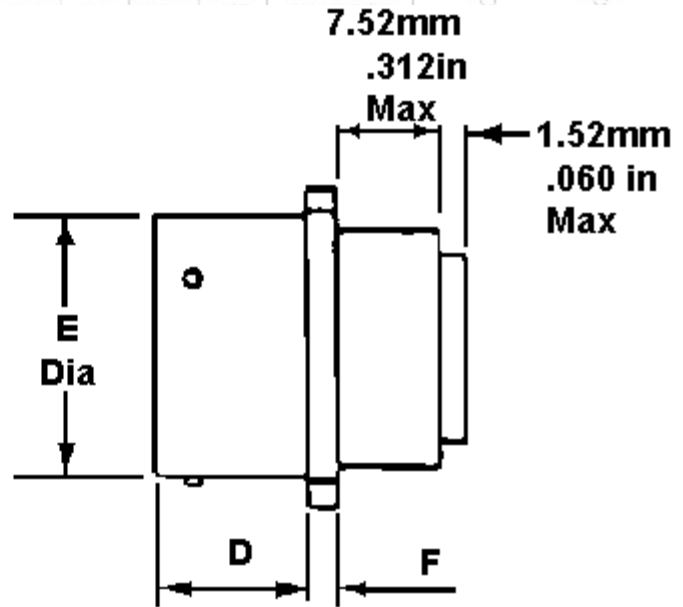
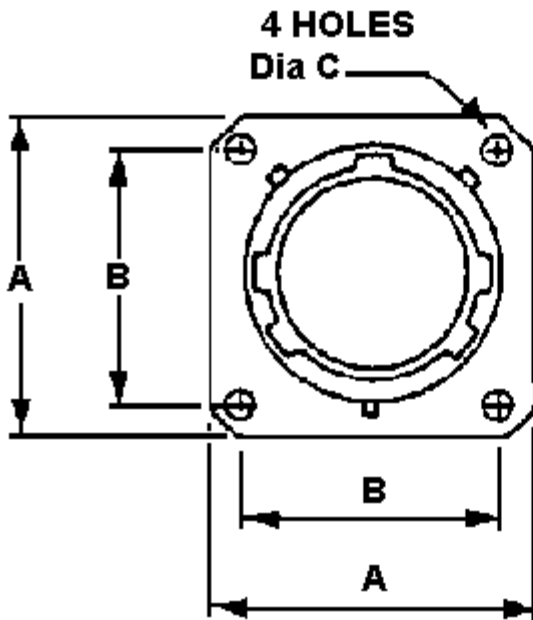


Allen Electric Connector Sales, Inc.



MS27496 SERIES I BOX MOUNTING FLANGE RECEPTACLE

SHELL SIZE	A MAX	B ±.005	C ±.002	D ±.005	E MAX	F -0.01	G +0.10	H MAX	J
9	.928	.554	.568	.120	1.215	.446	.052	.087	1/8-20 UNF
10	.954	.719	.585	.120	1.215	.446	.052	.087	5/8-24 UNF



SHELL SIZE	A MAX DIA		B NOM. CRS		C MIN DIA		E MAX DIA		D MAX		F MAX	
	INCH	MM	INCH	MM	INCH	MM	INCH	MM	INCH	MM	INCH	MM
9	.958	24.33	.719	18.26	.123	3.13	.573	14.55	0.632	16.05	0.1	2.54
11	1.051	26.69	.812	20.62	.123	3.13	.701	17.80	0.632	16.05	0.1	2.54
13	1.145	29.08	.906	23.01	.123	3.13	.851	21.61	0.632	16.05	0.1	2.54
15	1.239	31.47	.969	24.61	.123	3.13	.976	24.79	0.632	16.05	0.1	2.54
17	1.332	33.83	1.062	26.97	.123	3.13	1.101	27.96	0.632	16.05	0.1	2.54
19	1.458	37.03	1.156	29.36	.123	3.13	1.208	30.68	0.632	16.05	0.1	2.54
21	1.582	40.18	1.250	31.75	.123	3.13	1.333	33.85	0.602	15.29	0.13	3.3
23	1.708	43.38	1.375	34.93	.142	3.61	1.458	37.03	0.602	15.29	0.13	3.3
25	1.832	46.53	1.500	38.10	.142	3.61	1.583	40.20	0.602	15.29	0.13	3.3

- [MIL-DTL-38999 Insert and Contact Identification](#)
- [MIL-DTL-38999 Insert Arrangements](#)
- [MIL-DTL-38999 Contacts, Tooling, Wire Sizes, Sealing Plugs](#)
- [MIL-DTL-38999 Series I Locksmith Keying Polarization](#)
- [MIL-DTL-38999 Series I Panel Cut-Out Dimensions](#)
- [Series I & II Strain Reliefs](#)

MILITARY PART NUMBERING SYSTEM

MS27496

T

23

F

35

S

C

Polarization (not required for normal, A,B,C, or D for alternates)

Contact Style (P for Pin, S for Socket)

Insert Arrangement (Refer to MIL-C-38999 Insert Arrangements)

Finish:

B= Aluminum, olive drab cadmium over nickel -65 C to +175C

C= Aluminum, Anodic (Non-Conductive) -65 C to +200 C

F= Aluminum, electroless nickel, -65 C to +200 C

Shell Size: (odd numbers only, 9 thru 25)

Class:

T= Environmental with accessory threads and teeth
(with exception of box mount version)

E= Environmental (box mount versions only)

MS Number

22	1.578	1.500	1.485	1.20	1.275	1/2	.094	.112	15/16-18 UNF
24	1.703	1.375	1.615	1.47	1.275	3/4	.094	.212	17/16-18 UNF

For pricing and availability, please fill out our RFQ form



If you need any other information, please [E-Mail aecs@aecsinc.com](mailto:aecs@aecsinc.com)

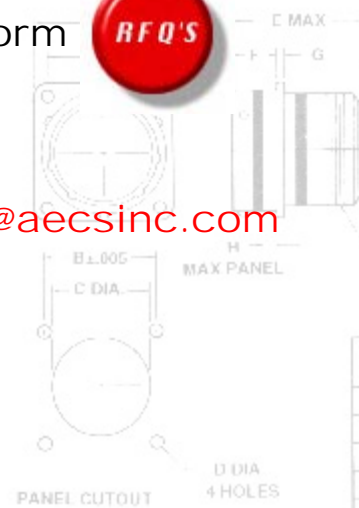
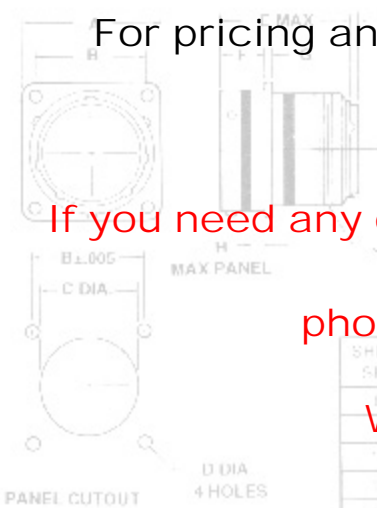


phone (703) 425-3815 fax (703) 425-3814

We look forward to hearing from you!



SHELL SIZE	A MAX	B ±.005	C ±.005	D ±.025	E MAX	F -0° C	G +0° C	H MAX	J TH-LEAD 2A
12	1.047	.672	.664	.120	1.215	.446	.062	.087	3/4-20 UNF
14	1.141	.715	.707	.120	1.215	.446	.062	.087	7/8-20 UNF
16	1.234	.758	.750	.120	1.215	.446	.062	.087	1-20 UNF
18	1.328	.801	.793	.120	1.215	.446	.062	.087	1 1/16-18 UNF
20	1.423	.844	.836	.120	1.215	.446	.062	.087	1 3/16-18 UNF
22	1.517	.887	.879	.120	1.215	.446	.062	.087	1 5/16-18 UNF
24	1.703	.930	.922	.120	1.215	.446	.062	.087	1 7/16-18 UNF



A Woman Owned Small Business, CAGE Code 07BG6