

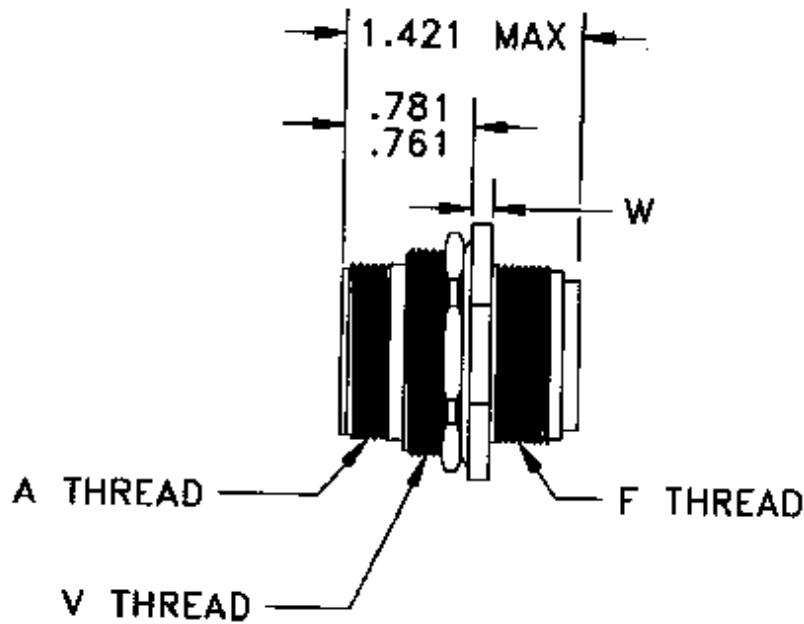
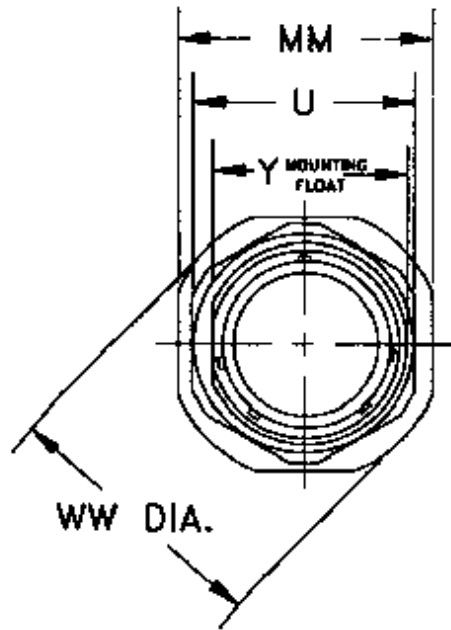


Allen Electric Connector Sales, inc.



MS24265 JAM NUT THREADED RECEPTACLE

SHELL SIZE	A	B	C	D	E	F	G	H	J
8	.828	.954	.988	1.20	1.215	.446	.062	.087	5/8-20 UNEF
10	.954	1.104	1.140	1.20	1.215	.446	.062	.087	3/4-20 UNEF



SHELL SIZE	Y +.003 MOUNTING FLAT	U MAX HEX.	MM +.010	WW MAX. DIA.	A THREAD CLASS 2A	F MOUNTING THREAD CLASS 2A	W +- .020	MAX PANEL	F THREAD CLASS 2A
8	.593	.828	.979	1.068	9/16-24 UNEF	5/8-20 UNEF	.117	.125	7/16-28 UNEF
10	.718	.953	1.104	1.192	11/16-24 UNEF	3/4-20 UNEF	.117	.125	9/16-24 UNEF
12	.905	1.140	1.291	1.380	7/8-20 UNEF	15/16-20 UNEF	.117	.125	3/4-20 UNEF
14	.968	1.250	1.391	1.505	15/16-20 UNEF	1-20 UNEF	.117	.125	13/16-20 UNEF
16	1.093	1.329	1.516	1.630	1 1/16-18 UNEF	1 1/8-20 UNEF	.117	.125	15/16-20 UNEF
18	1.217	1.455	1.641	1.740	1 3/16-18 UNEF	1 1/4-20 UNEF	.117	.125	1 1/16-18 UNEF
20	1.342	1.642	1.766	1.860	1 5/16-18 UNEF	1 3/8-20 UNEF	.117	.125	1 3/16-18 UNEF
22	1.467	1.705	1.954	2.040	1 7/16-18 UNEF	1 1/2-20 UNEF	.148	.125	1 5/16-18 UNEF
24	1.592	1.892	2.079	2.160	1 9/16-18 UNEF	1 5/8-18 UNEF	.148	.125	1 7/16-18 UNEF

[MIL-DTL-26500 Polarizing Locksmith Keyed Positions](#)
[MIL-DTL-26500 Insert Arrangements](#)
[Panel Cut-Out Dimensions](#)

MILITARY PART NUMBERING SYSTEM

MS24265

R

18

T

31

P

N

Polarization (N for normal, Alternates 6,7,8,9 or Y)

Contact Style (P for Pin, S for Socket)

Insert Arrangement (2 thru 61 per MIL-STD 1554)

Coupling (T= Threaded, B= Bayonet)

Shell Size: Even numbers 8 thru 24

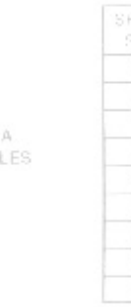
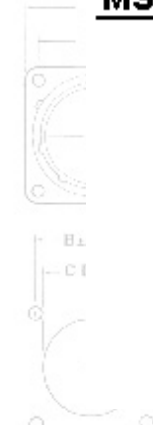
Environmental Class: R= MIL-C-26500 (USAF)

MS Number

MS24264 (Square Flange Receptacle)

MS24265 (Jam Nut Receptacle)

MS24266 (Plug)



M	ENV	C	IA	ENV	ENV	ENV	ENV	ENV	ENV	ENV	ENV
12	1.047	8*2	954	120	1.215	446	062	087	3/4-20 UNEF		
14	1.141	906	969	120	1.215	446	062	087	7/8-20 UNEF		
16	1.234	066	1.115	120	1.215	446	062	087	1-20 UNEF		
20	1.448	1.150	1.365	120	1.275	572	094	212	1 3/16-8 UNEF		
22	1.578	1.250	1.485	120	1.275	572	094	212	1 5/16-8 UNEF		
24	1.708	1.375	1.615	147	1.275	504	094	212	1 7/16-8 UNEF		

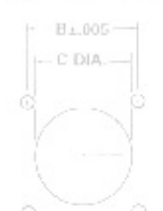
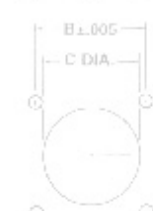
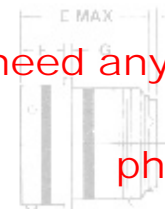
For pricing and availability, please fill out our RFQ form



If you need any other information, please [E-Mail aecs@aecsinc.com](mailto:aecs@aecsinc.com)

phone (703) 425-3815 fax (703) 425-3814

We look forward to hearing from you!



SHELL SIZE	A MAX	C	IA	ENV	ENV	ENV	ENV	ENV	ENV	ENV	J THREAD SA
8	820										1/2-20 UNF
10	954										5/8-24 UNEF
12	1.047										3/4-20 UNEF
14	1.141	906	969	120	1.215	446	062	087			7/8-20 UNEF
16	1.234	066	1.115	120	1.215	446	062	087			1-20 UNEF
20	1.448	1.150	1.365	120	1.275	572	094	212			1 3/16-8 UNEF
22	1.578	1.250	1.485	120	1.275	572	094	212			1 5/16-8 UNEF
24	1.708	1.375	1.615	147	1.275	504	094	212			1 7/16-8 UNEF



A Woman Owned Small Business, CAGE Code 07BG6