

# Allen Electric Connector Sales, inc.

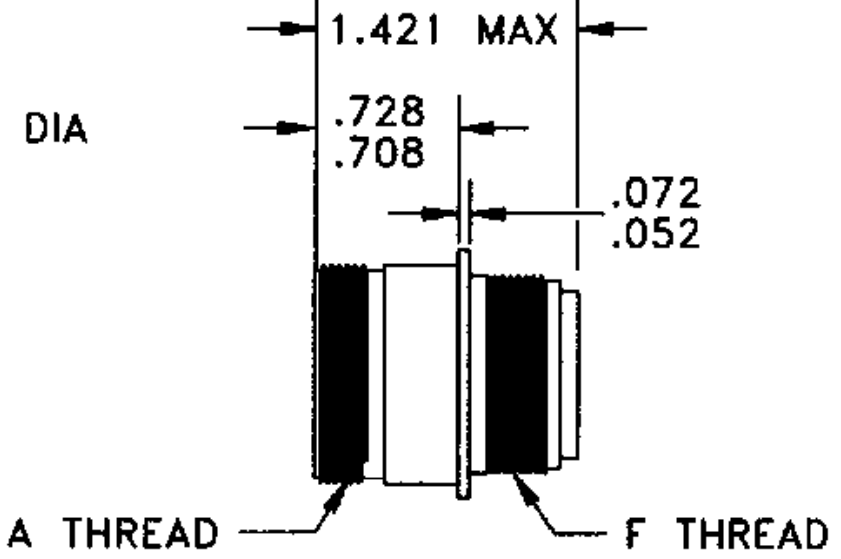
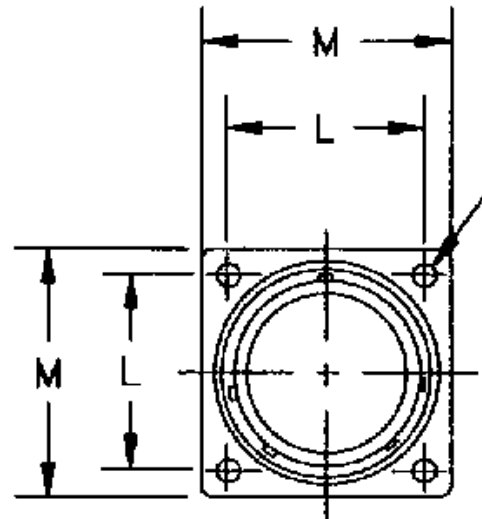
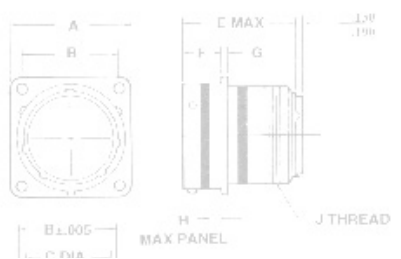
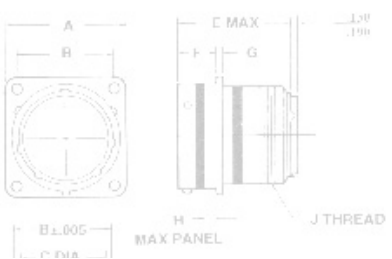
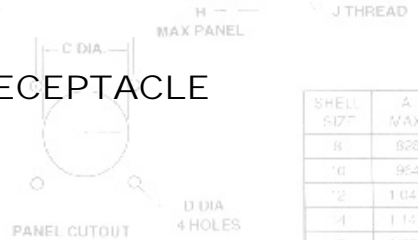
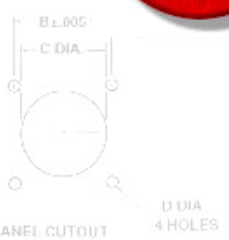


## MS24264 SQUARE FLANGE THREADED RECEPTACLE



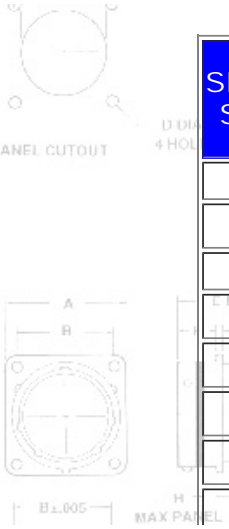
SIZ <sup>T</sup>	MAX	+0.005	+0.005	-0.006	MAX	+0.0	+0.10	MAX	TH-HEAD 2A
8	.828	.564	.568						EF
10	.954	.719	.683						EF
12	1.047	.812	.684						EF
14	1.121	.906	.689						EF
16	1.234	.969	1.115						EF
18	1.308	1.062	1.236						NEF
20	1.413	1.156	1.363						NEF
22	1.578	1.250	1.486						NEF
24	1.703	1.375	1.615						NEF

SHELL SIZ <sup>T</sup>	A MAX	B ±.005
8	.828	.564
10	.954	.719
12	1.047	.812
14	1.121	.906
16	1.234	.969
18	1.308	1.062
20	1.413	1.156
22	1.578	1.250
24	1.703	1.375



SHELL SIZE	L ±.005 CL-CL MOUNTING HOLE	M ±.010	LL DIA. +.000 -0.009	A THREAD CLASS 2A	E MAX PANEL THICKNESS	F THREAD CLASS 2A
8	.594	.812	.125	9/16-24 UNEF	.125	7/16-28 UNEF
10	.719	.937	.125	11/16-24 UNEF	.125	9/16-24 UNEF
12	.812	1.031	.125	7/8-20 UNEF	.125	3/4-20 UNEF
14	.906	1.125	.125	15/16-20 UNEF	.125	13/16-20 UNEF
16	.969	1.250	.125	1 1/16-18 UNEF	.125	15/16-20 UNEF
18	1.062	1.343	.125	1 3/16-18 UNEF	.125	1 1/16-18 UNEF
20	1.156	1.437	.125	1 5/16-18 UNEF	.125	1 3/16-18 UNEF
22	1.250	1.562	.125	1 7/16-18	.125	1 5/16-18 UNEF

SHELL SIZ <sup>T</sup>	A MAX	B ±.005
8	.828	.564
10	.954	.719
12	1.047	.812
14	1.121	.906
16	1.234	.969
18	1.308	1.062
20	1.413	1.156
22	1.578	1.250
24	1.703	1.375



[MIL-DTL-26500 Polarizing Locksmith Keyed Positions](#)  
[MIL-DTL-26500 Insert Arrangements](#)  
[Panel Cut-Out Dimensions](#)

24	1.375	1.703	.154	1 9/16-18 UNEF	.125	1 7/16-18 UNEF
----	-------	-------	------	----------------	------	----------------

### MILITARY PART NUMBERING SYSTEM

**MS24264**

**R**

**14**

**T**

**12**

**S**

**N**

**Polarization (N for normal, Alternates 6,7,8,9 or Y)**

**Contact Style (P for Pin, S for Socket)**

**Insert Arrangement (2 thru 61 per MIL-STD 1554)**

**Coupling (T= Threaded, B= Bayonet)**

**Shell Size: Even numbers 8 thru 24**

**Environmental Class: R= MIL-C-26500 (USAF)**

**MS Number**

**MS24264 (Square Flange Receptacle)**

**MS24265 (Jam Nut Receptacle)**

**MS24266 (Plug)**

For pricing and availability, please fill out our RFQ form



If you need any other information, please [E-Mail aecs@aecsinc.com](mailto:aecs@aecsinc.com)



phone (703) 425-3815 fax (703) 425-3814

We look forward to hearing from you!



A Woman Owned Small Business, CAGE Code 07BG6