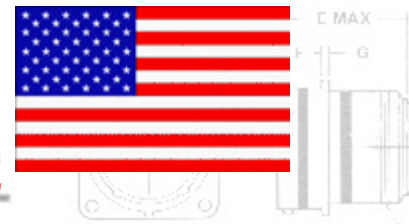




Allen Electric Connector Sales, inc.

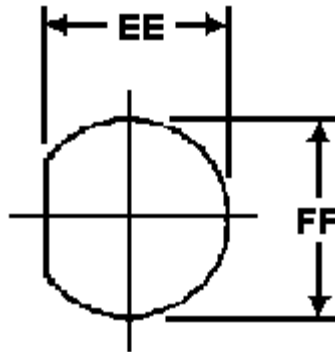


MIL-DTL-83723 SERIES III PANEL CUT-OUT DIMENSIONS

RECEPTACLES, SINGLE HOLE MOUNT, THREADED OR BAYONET

M83723/73 M83723/74 M83723/84 M83723/85

SHELL SIZE	A MAX	B MAX	C MAX	D MAX	E MAX	F MAX	G MAX	H MAX	J TH-HEAD 2A
8	.954	.719	.585	.120	1.215	.446	.052	.087	5/8-24 UNEF
10	1.141	.906	.762	.120	1.215	.446	.087	.087	7/8-20 UNEF
12	1.234	.980	1.115	.120	1.215	.446	.087	.087	1-20 UNEF
14	1.328	1.052						.087	1 1/16-18 UNLF
16	1.418	1.150						.087	1 3/16-18 UNLF
18	1.509	1.250						.112	1 5/16-18 UNLF
20	1.603	1.375						.112	1 7/16-18 UNLF



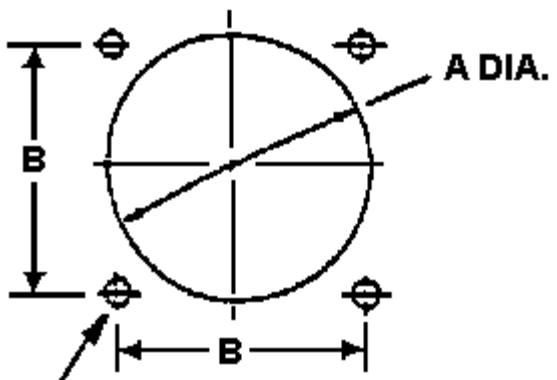
SHELL SIZE	EE +-.005	FF +-.005
8	.805	.635
10	.730	.760
12	.917	.947
14	.980	1.010
16	1.105	1.135
18	1.229	1.260
20	1.354	1.510
22	1.479	1.510
24	1.604	1.635

RECEPTACLES, SQUARE FLANGE, THREADED OR BAYONET

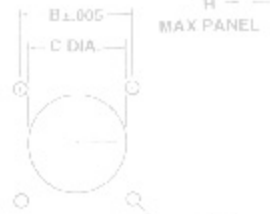
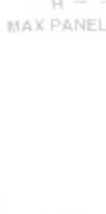
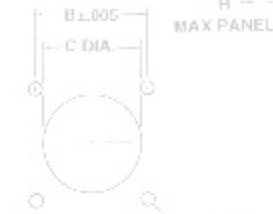
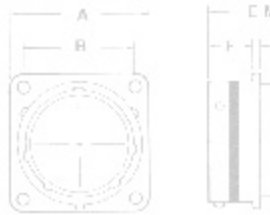
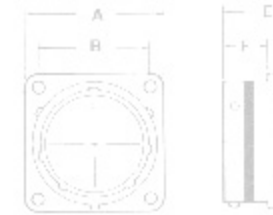
M83723/71 M83723/72 M83723/82 M83723/83



10	1.1
12	1.2
14	1.3
16	1.4
18	1.5
20	1.6
22	1.7
24	1.8



8-24 UNEF
4-20 UNEF
5-20 UNEF
20 UNEF
16-8 UNLF
16-8 UNEF
16-8 UNEF
16-8 UNEF



**NO. 4 Screw
(Sizes 8 Thru 22)
No. 6 Screw (Size 24)**

SHELL SIZE	A	J
	MAX	4-EAG 2A
8	.620	.562
10	.748	.598
12	.913	.620
14	1.072	.645
16	1.209	.662
18	1.337	.687
20	1.452	.712
22	1.577	.737
24	1.703	.762

SHELL SIZE	A ±.005				B ±.005	
	BACK MOUNT		FRONT MOUNT			
	INCH	MM	INCH	MM	INCH	MM
8	.620	15.75	.447	11.35	.599	15.21
					.589	14.96
10	.748	19.00	.572	14.53	.724	18.39
					.714	18.14
12	.913	23.19	.760	19.30	.817	20.75
					.807	20.50
14	.980	24.89	.822	20.88	.911	23.14
					.901	22.89
16	1.107	28.12	.948	24.08	.974	24.74
					.964	24.49
18	1.209	30.71	1.072	27.23	1.067	27.10
					1.057	26.85
20	1.337	33.96	1.192	30.28	1.161	29.49
					1.151	29.24
22	1.452	36.88	1.322	33.58	1.255	31.88
					1.245	31.62
24	1.577	40.06	1.442	36.63	1.380	35.05
					1.370	34.30

For pricing and availability, please fill out our RFQ form



If you need any other information, please [E-Mail aecs@aecsinc.com](mailto:aecs@aecsinc.com)



phone (703) 425-3815 fax (703) 425-3814