

Allen Electric Connector Sales, inc.

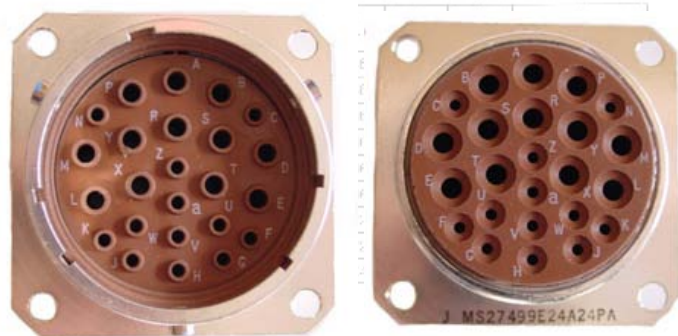


MIL-DTL-38999 Series II

Shell Size	820	854	868	120	1215	446	952	987	3/4-20 UNEF
6	854	719	825	120	1215	446	952	987	3/4-20 UNEF
12	1047	812	864	120	1215	446	952	987	3/4-20 UNEF
14	1141	906	969	120	1215	446	952	987	3/4-20 UNEF
16	1234	988	1115	120	1215	446	952	987	1-20 UNEF
18	1328	1070	1197	120	1215	446	952	987	1-20 UNEF
20	1421	1152	1279	120	1215	446	952	987	1-20 UNEF
22	1515	1234	1361	120	1215	446	952	987	1-20 UNEF
24	1608	1316	1443	120	1215	446	952	987	1-20 UNEF



SHELL SIZE	6	12	14	16	18	20	22	24
6	854	719	825	120	1215	446	952	987
12	1047	812	864	120	1215	446	952	987
14	1141	906	969	120	1215	446	952	987
16	1234	988	1115	120	1215	446	952	987
18	1328	1070	1197	120	1215	446	952	987
20	1421	1152	1279	120	1215	446	952	987
22	1515	1234	1361	120	1215	446	952	987
24	1608	1316	1443	120	1215	446	952	987



The MIL-DTL-38999 Series II connectors are bayonet coupling subminiature configuration with a low profile design using a shorter socket contact than used by Series I and III. This series is used for instrumentation applications where space is at a premium. Series II is not scoop proof. Series II is available in nine shell sizes with five receptacle configurations and standard or RFI plugs. 54 insert arrangements using 3 to 128 contacts terminating wire gauge sizes 28 through 12. The hard plastic socket interface features the chamfered conical entry that aids in proper contact mating. The fluorosilicone interfacial seal has conical risers around each pin contact that compress into the socket interface, assuring the seal of the mating surface. Cadmium over Nickel, Anodic and electroless nickel finishes are available for aluminium shells.

GENERAL SPECIFICATIONS

Contacts: Sizes 22D, 20, 16, and 12 gauge per MIL-C-39029	Operating Temperature Range: Listed under Part Numbering System Below
Environmental Fluorosilicone Elastomers	Voltage Service Rating: M = 400 v, I = 600 v, II = 900 v
Polarization: Locksmith Keying	Contact Current Rating: Size 22D: 5 amps, Size 20: 7.5 amps, Size 16: 13 amps, Size 12: 23 amps

MILITARY PART NUMBERING SYSTEM

MS27474

T

22

F

35

P

A

- Polarization (not required for normal)**
- Contact Style (P for Pin, S for Socket)**
- Insert Arrangement (Refer to MIL-C-38999 Insert Arrangements)**
- Finish:**
 - B= Aluminum, olive drab cadmium over nickel -65 C to +175C**
 - C= Aluminum, Anodic (Non-Conductive) -65 C to +200 C**
 - F= Aluminum, electroless nickel, -65 C to +200 C**
- Shell Size: (even numbers only, 8 thru 24)**
- Class:**
 - T= Environmental with accessory threads and teeth (with exception of box mount version)**
 - E= Environmental (box mount versions only)**
- MS Number**
 - MS27472= wall mount flange receptacle**
 - MS27473= standard plug**
 - MS27474= jam nut mount receptacle**
 - MS27499= box mount receptacle**
 - MS27508= box mount flange receptacle**
 - MS27497= back panel wall mount receptacle**
 - MS27484= RFI Plug**
 - MS27513= box mount flange long grommet receptacle**

[Series II Polarization & Shell Keying](#)

[Series II Panel Cut-Out Dimensions](#)

[Series I & II Strain Reliefs](#)

[MS27473 Series II Standard Plug](#)

[MS27484 Series II Plug with RFI Grounding](#)

[MS27472 Series II Wall Mounting Flange Receptacle](#)

[MS27497 Series II Back Panel Wall Mounting Flange Receptacle](#)

[MS27474 Series II Jam Nut Receptacle](#)

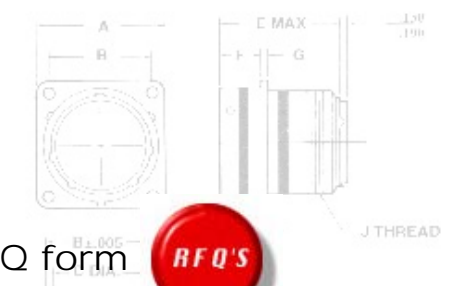
[MS27499 Series II Back Box Mount Flange Receptacle](#)

[MS27508 Series II Back Panel Box Mount Flange Receptacle](#)

[MS27513 Series II Long Grommet Box Mount Flange Receptacle](#)

SHELL SIZE	MAX	-0.005	+0.005	-0.005	MAX	-0.010	+0.010	MAX	TH-LEAD 2A
8	.820	.554	.568	.120	1.215	.446	.052	.087	1/2-20 UNF
10	.954	.719	.685	.120	1.215	.446	.052	.087	5/8-24 UNF
12	1.047	.806	.772	.120	1.215	.446	.067	.087	3/4-20 UNF
14	1.141	.906	.872	.120	1.215	.446	.067	.087	7/8-20 UNF
16	1.234	.988	1.115	.120	1.215	.446	.067	.087	1-20 UNF
18	1.328	1.082	1.236	.120	1.215	.446	.067	.087	1 1/16-18 UNF
20	1.433	1.180	1.365	.120	1.275	.522	.094	.212	1 3/16-18 UNF
22	1.528	1.280	1.485	.120	1.275	.522	.094	.212	1 5/16-18 UNF
24	1.703	1.375	1.615	.120	1.275	.522	.094	.212	1 7/16-18 UNF

SHELL SIZE	MAX
8	.820
10	.954
12	1.047
14	1.141
16	1.234
18	1.328
20	1.433
22	1.528
24	1.703



For pricing and availability, please fill out our RFQ form

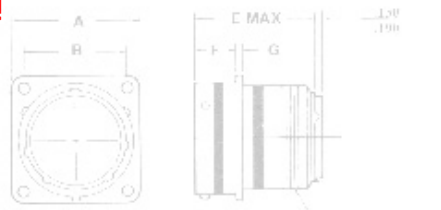
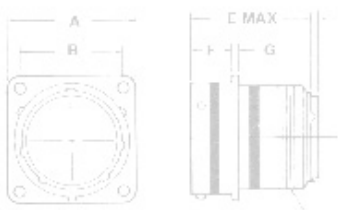


SHELL SIZE	A	B	C	D	E	F	G	H	J
8	.820	.554	.568	.120	1.215	.446	.052	.087	
10	.954	.719	.685	.120	1.215	.446	.052	.087	
12	1.047	.806	.772	.120	1.215	.446	.067	.087	
14	1.141	.906	.872	.120	1.215	.446	.067	.087	
16	1.234	.988	1.115	.120	1.215	.446	.067	.087	
18	1.328	1.082	1.236	.120	1.215	.446	.067	.087	
20	1.433	1.180	1.485	.120	1.275	.522	.094	.212	1 5/16-18 UNF
22	1.528	1.280	1.615	.120	1.275	.522	.094	.212	1 7/16-18 UNF

If you need any other information, please [E-Mail aecs@aecsinc.com](mailto:aecs@aecsinc.com)

phone (703) 425-3815 fax (703) 425-3814

We look forward to hearing from you!



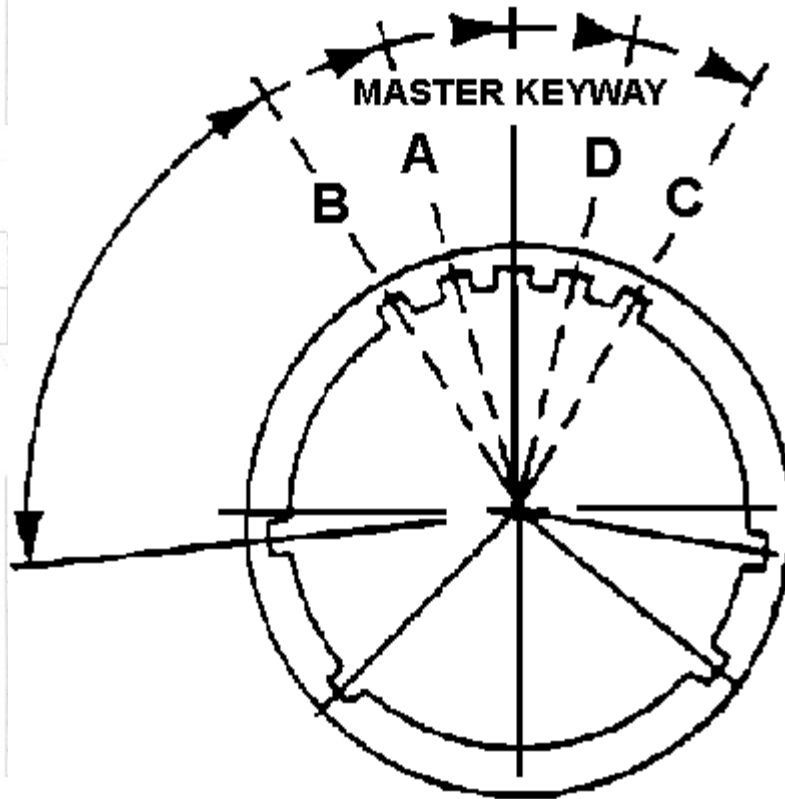


Allen Electric Connector Sales, inc.



MIL-DTL-38999 SERIES II LOCKSMITH KEYING POLARIZATION

(MACHINED INTO SHELL)



SHOWN IS THE FACE OF THE RECEPTACLE , PLUG ANGLE IS OPPOSITE

SHELL KEYING

SHELL SIZE	ANGLES IN DEGREES				
	NORMAL	A	B	C	D
8	100	182			118
10	100	86	72	128	114
12	100	80	68	132	120
14	100	79	66	134	121
16	100	82	70	130	118
18	100	82	70	130	118
20	100	82	70	130	118

22	100	85	74	126	115
24	100	85	74	126	115

For pricing and availability, please fill out our RFQ form



If you need any other information, please [E-Mail aecs@aecsinc.com](mailto:aecs@aecsinc.com)



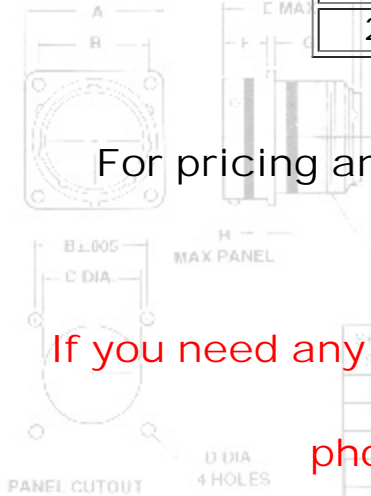
phone (703) 425-3815 fax (703) 425-3814

We look forward to hearing from you!



A Woman Owned Small Business, CAGE Code 07BG6

Copyright © 2008 Allen Electric Connector Sales, Inc. All Rights Reserved.





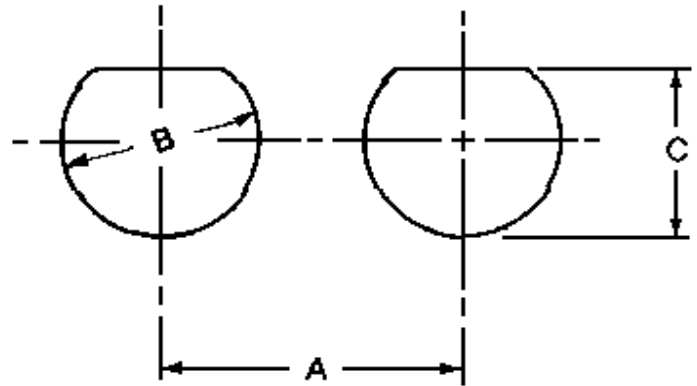
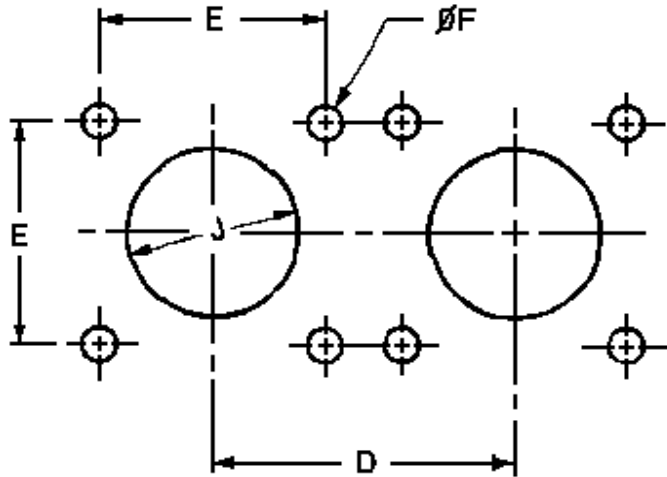
Allen Electric Connector Sales, inc.



MIL-DTL-38999 SERIES II PANEL CUT-OUT DIMENSIONS

FLANGE MOUNT

JAM MOUNT



SHELL SIZE	A MIN	B +.010-.000	C +.000-.010	D MIN	E	F +.005
8	1.299	.884	.830	.846	.594	.128
10	1.417	1.007	.955	.984	.719	.128
12	1.575	1.134	1.084	1.063	.812	.128
14	1.693	1.259	1.208	1.181	.906	.128
16	1.850	1.384	1.333	1.299	.969	.128
18	2.008	1.507	1.459	1.437	1.062	.128
20	2.126	1.634	1.576	1.535	1.156	.128
22	2.362	1.759	1.701	1.673	1.250	.128
24	2.520	1.864	1.826	1.811	1.375	.154

For pricing and availability, please fill out our RFO form



If you need any other information, please E-Mail aecs@aecsinc.com





Allen Electric Connector Sales, inc.



MS27473 SERIES II STANDARD PLUG

SHELL SIZE	A MAX	B ±.005	C ±.035	D ±.035	E MAX	F -0.0	G +0.10	H MAX	J TH-HEAD 2A
8	.828	.554	.568	.120	1.215	.445	.052	.087	62-20 UNF
10	.954	.719	.585	.120	1.215	.445	.052		



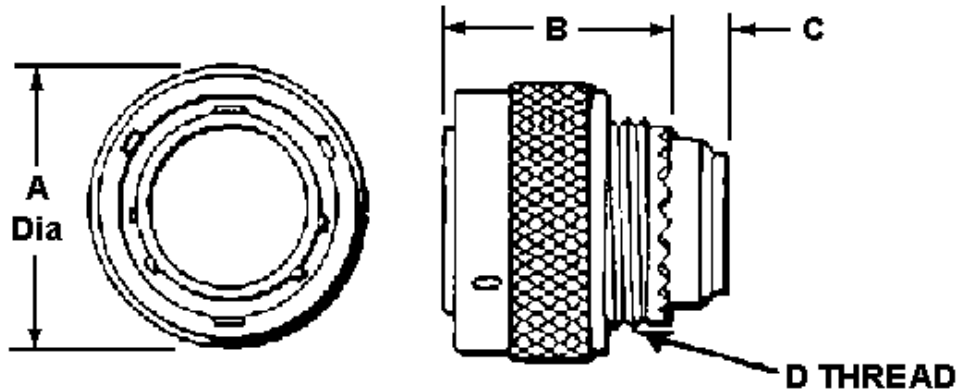
SHELL SIZE	A MAX
8	.828
10	.954
12	1.047
14	1.141
16	1.234
18	1.328
20	1.423
22	1.518
24	1.613

MS27484 SERIES II PLUG WITH RFI GROUNDING

SHELL SIZE	A MAX	B ±.005	C ±.035	D ±.035	E MAX	F -0.0	G +0.10	H MAX	J TH-HEAD 2A
8	.828	.554	.568	.120	1.215	.445	.052	.087	62-20 UNF
10	.954	.719	.585	.120	1.215	.445	.052		



SHELL SIZE	A MAX
8	.828
10	.954
12	1.047
14	1.141
16	1.234
18	1.328
20	1.423
22	1.518
24	1.613



Δ	1.415	1.530	1.493	Δ	1.610	1.725	1.687	Δ	1.785	1.900
22	1.508	1.620	1.486	1.30	1.375	1.52	.094	212	15/16-18 UNF	

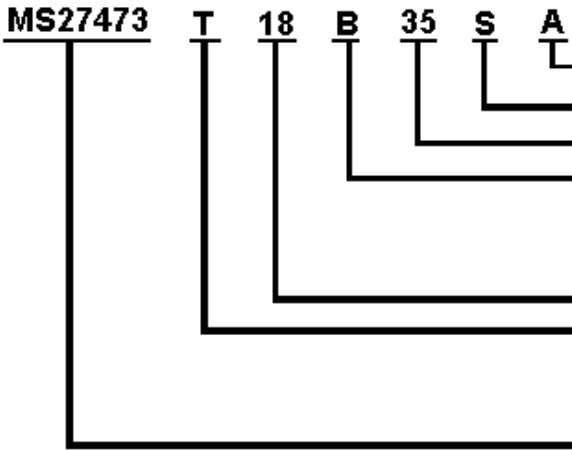
SHELL SIZE	D THREAD CLASS 2A	A DIA		B		C	
		INCH	MM	INCH	MM	INCH	MM
8							
10							
12							
14							
16							
18							
20							
22							
24							

8	.4375-28 UNEF	.745	18.92	.750	19.05	.140	3.56
10	.5625-24 UNEF	.859	21.82	.750	19.05	.140	3.56
12	.6875-24 UNEF	1.023	25.98	.750	19.05	.140	3.56
14	.8125-20 UNEF	1.141	28.98	.750	19.05	.140	3.56
16	.9375-20 UNEF	1.275	32.39	.750	19.05	.140	3.56
18	1.0625-18 UNEF	1.406	35.71	.750	19.05	.140	3.56
20	1.1875-18 UNEF	1.525	38.74	.750	19.05	.140	3.56
22	1.3125-18 UNEF	1.641	41.68	.750	19.05	.140	3.56
24	1.4375-18 UNEF	1.760	44.70	.750	19.05	.140	3.56

- [MIL-DTL-38999 Insert and Contact Identification](#)
- [MIL-DTL-38999 Insert Arrangements](#)
- [MIL-DTL-38999 Contacts, Tooling, Wire Sizes, Sealing Plugs](#)
- [Series II Polarization & Shell Keying](#)
- [Series I & II Strain Reliefs](#)

SIZE	A	B	C	D	E	F	G	H	J
MAX	.005	±.005	-.003	MAX	-.015	+.010	MAX	1H-14D 3A	

MILITARY PART NUMBERING SYSTEM



- Polarization (not required for normal)**
- Contact Style (P for Pin, S for Socket)**
- Insert Arrangement (Refer to MIL-C-38999 Insert Arrangements)**
- Finish:**
 - B= Aluminum, olive drab cadmium over nickel -65 C to +175C**
 - C= Aluminum, Anodic (Non-Conductive) -65 C to +200 C**
 - F= Aluminum, electroless nickel, -65 C to +200 C**
- Shell Size: (even numbers only, 8 thru 24)**
- Class:**
 - T= Environmental with accessory threads and teeth (with exception of box mount version)**
 - E= Environmental (box mount versions only)**
- MS Number**
 - MS27472= wall mount flange receptacle**
 - MS27473= standard plug**
 - MS27474= jam nut mount receptacle**
 - MS27499= box mount receptacle**
 - MS27508= box mount flange receptacle**
 - MS27497= back panel wall mount receptacle**
 - MS27484= RFI Plug**
 - MS27513= box mount flange long grommet receptacle**

22	1.578	1.450	1.485	20	1.275	5/2	.094	212	1.576-18 UNEF
24	1.703	1.375	1.615	18	1.275	1/2	.094	212	1.716-18 UNEF

For pricing and availability, please fill out our RFQ form



If you need any other information, please [E-Mail aecs@aecsinc.com](mailto:aecs@aecsinc.com)

phone (703) 425-3815 fax (703) 425-3814

We look forward to hearing from you!

SHELL	A	B	C	D	E	F	G	H	I	J
8	828	554	368	120	1215	446	052	087	3/4-20 UNEF	
10	954	719	585	120	1215	446	052	087	3/4-20 UNEF	
12	1047	812	661	120	1215	446	062	087	3/4-20 UNEF	
14	1141	905	737	120	1215	446	062	087	1-20 UNEF	
16	1234	998	813	120	1215	446	062	087	1-20 UNEF	
18	1328	1092	889	120	1215	446	062	087	1-20 UNEF	
20	1423	1186	965	120	1215	446	062	087	1-20 UNEF	
22	1517	1280	1041	120	1215	446	062	087	1-20 UNEF	
24	1708	1375	1117	120	1215	446	062	087	1-20 UNEF	

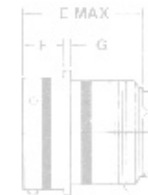
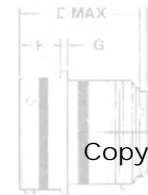
[Home](#)

[Site Map](#)

[PDF file](#)

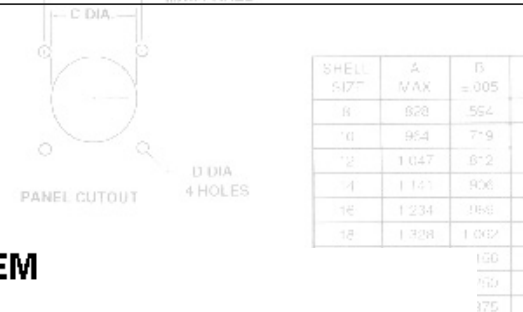
A Woman Owned Small Business, CAGE Code 07BG6

Copyright © 2008 Allen Electric Connector Sales, Inc. All Rights Reserved.

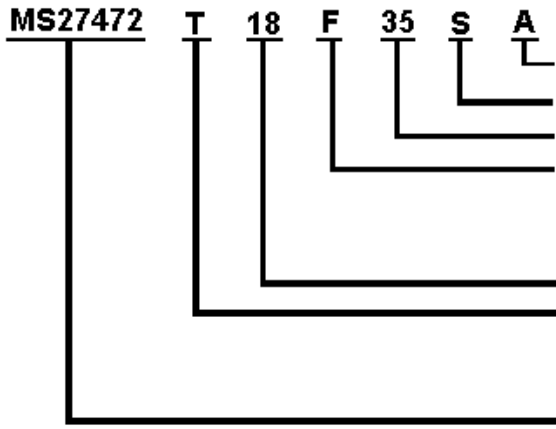


8	.4375-28	0.827	21.00	0.594	15.09	.120	3.05	.370	.940	.474	12.04	.322	8.18	.069	1.75	.308	7.83	.447	11.35
10	.5625-24	0.953	24.2	0.719	18.26	.120	3.05	.370	.940	.591	15.01	.322	8.18	.069	1.75	.308	7.83	.447	11.35
12	.6875-24	1.047	26.6	0.812	20.62	.120	3.05	.370	.940	.751	19.08	.322	8.18	.069	1.75	.308	7.83	.447	11.35
14	.8125-20	1.141	28.98	0.906	23.01	.120	3.05	.370	.940	.876	22.25	.322	8.18	.069	1.75	.308	7.83	.447	11.35
16	.9375-20	1.234	31.34	0.969	24.61	.120	3.05	.370	.940	1.001	25.43	.322	8.18	.069	1.75	.308	7.83	.447	11.35
18	1.0625-18	1.327	33.7	1.062	26.97	.120	3.05	.370	.940	1.126	28.60	.322	8.18	.069	1.75	.308	7.83	.447	11.35
20	1.1875-18	1.453	36.9	1.156	29.36	.120	3.05	.370	.940	1.251	31.78	.322	8.18	.069	1.75	.308	7.83	.447	11.35
22	1.3125-18	1.578	40.08	1.25	31.75	.120	3.05	.370	.940	1.376	34.95	.322	8.18	.069	1.75	.308	7.83	.447	11.35
24	1.4375-18	1.703	43.26	1.375	34.93	.147	3.73	.370	.940	1.501	38.31	.322	8.18	.069	1.75	.308	7.83	.447	11.35

- [MIL-DTL-38999 Insert and Contact Identification](#)
- [MIL-DTL-38999 Insert Arrangements](#)
- [MIL-DTL-38999 Contacts, Tooling, Wire Sizes, Sealing Plugs](#)
- [Series II Polarization & Shell Keying](#)
- [Series II Panel Cut-Out Dimensions](#)
- [Series I & II Strain Reliefs](#)



MILITARY PART NUMBERING SYSTEM



- Polarization (not required for normal)**
- Contact Style (P for Pin, S for Socket)**
- Insert Arrangement (Refer to MIL-C-38999 Insert Arrangements)**
- Finish:**
 - B= Aluminum, olive drab cadmium over nickel -65 C to +175C**
 - C= Aluminum, Anodic (Non-Conductive) -65 C to +200 C**
 - F= Aluminum, electroless nickel, -65 C to +200 C**
- Shell Size: (even numbers only, 8 thru 24)**
- Class:**
 - T= Environmental with accessory threads and teeth (with exception of box mount version)**
 - E= Environmental (box mount versions only)**
- MS Number**
 - MS27472= wall mount flange receptacle**
 - MS27473= standard plug**
 - MS27474= jam nut mount receptacle**
 - MS27499= box mount receptacle**
 - MS27508= box mount flange receptacle**
 - MS27497= back panel wall mount receptacle**
 - MS27484= RFI Plug**
 - MS27513= box mount flange long grommet receptacle**

For pricing and availability, please fill out our RFQ form



If you need any other information, please [E-Mail aecs@aecsinc.com](mailto:aecs@aecsinc.com)



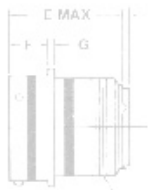
phone (703) 425-3815 fax (703) 425-3814

SHELL	A	B
8	.820	.564
10	.954	.719
12	1.047	.872
14	1.141	.906
16	1.234	.968
18	1.327	1.002
20	1.453	1.050
22	1.578	1.100
24	1.703	1.150

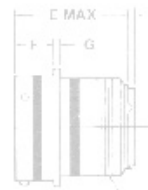
We look forward to hearing from you!

20	1.418	1.250	1.485	1.20	1.275	1/2	094	212	1.7/16-18 UNF
22	1.578	1.410	1.485	1.20	1.275	1/2	094	212	1.7/16-18 UNF
24	1.708	1.375	1.615	1.47	1.275	1/4	094	212	1.7/16-18 UNF

20	1.418	1.160							
22	1.578	1.410							
24	1.708	1.375							



1.00
.190



1.00
.190

A Woman Owned Small Business, CAGE Code 07BG6



H —
MAX PANEL

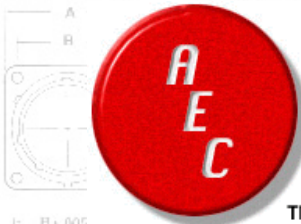
J THREAD

Copyright © 2008 Allen Electric Connector Sales, Inc. All Rights Reserved.

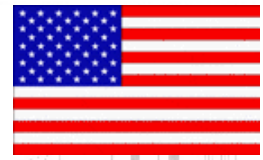


H —
MAX PANEL

J THREAD

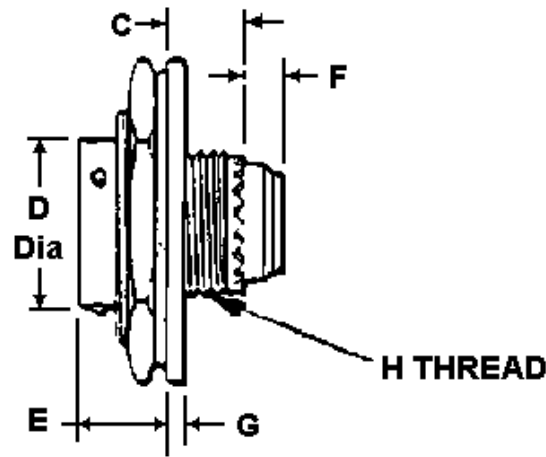
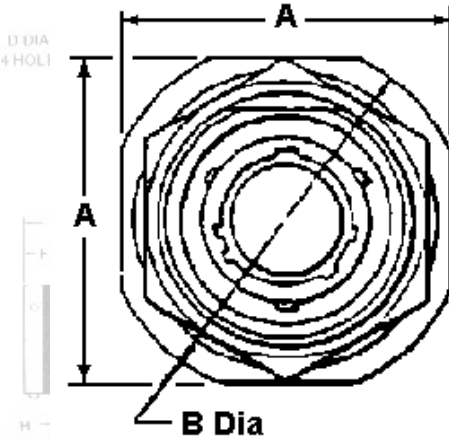


Allen Electric Connector Sales, inc.



MS27474 SERIES II JAM NUT RECEPTACLE

SHELL SIZE	A MAX	B DIA	C	D DIA	E	F	G	H THREAD
8	1.266	1.391	0.317	8.05	0.474	11.25	0.140	2.64
10	1.389	1.515	0.317	8.05	0.591	11.25	0.140	2.64
12	1.515	1.641	0.317	8.05	0.751	11.25	0.140	2.64
14	1.641	1.766	0.317	8.05	0.876	11.25	0.140	2.64
16	1.795	1.954	0.317	8.05	1.001	11.25	0.140	2.64
18	1.905	2.031	0.317	8.05	1.126	11.25	0.140	2.64
20	2.031	2.157	0.291	7.39	1.251	11.91	0.140	2.64
22	2.156	2.281	0.291	7.39	1.376	11.91	0.140	2.64
24	2.279	2.405	0.291	7.39	1.501	11.91	0.140	2.64



SHELL SIZE	A MAX		B DIA		C		D DIA		E		F		G		H THREAD CLASS 2A UNEF
	INCH	MM	INCH	MM	INCH	MM	INCH	MM	INCH	MM	INCH	MM	INCH	MM	
8	1.266	32.16	1.391	35.33	0.317	8.05	0.474	12.04	.443	11.25	.140	3.56	.104	2.64	.4375-28
10	1.389	35.28	1.515	38.48	0.317	8.05	0.591	15.01	.443	11.25	.140	3.56	.104	2.64	.5625-24
12	1.515	38.48	1.641	41.68	0.317	8.05	0.751	19.08	.443	11.25	.140	3.56	.104	2.64	.6875-24
14	1.641	41.86	1.766	44.86	0.317	8.05	0.876	22.25	.443	11.25	.140	3.56	.104	2.64	.8125-20
16	1.795	45.59	1.954	49.63	0.317	8.05	1.001	25.43	.443	11.25	.140	3.56	.104	2.64	.9375-20
18	1.905	48.39	2.031	51.59	0.317	8.05	1.126	28.6	.443	11.25	.140	3.56	.104	.264	1.0625-18
20	2.031	51.59	2.157	54.78	0.291	7.39	1.251	31.78	.469	11.91	.140	3.56	.104	2.64	1.1875-18
22	2.156	54.94	2.281	57.94	0.291	7.39	1.376	34.95	.469	11.91	.140	3.56	.104	2.64	1.3125-18
24	2.279	57.89	2.405	61.09	0.291	7.39	1.501	38.13	.469	11.91	.140	3.56	.104	2.64	1.4375-18

- [MIL-DTL-38999 Insert and Contact Identification](#)
- [MIL-DTL-38999 Insert Arrangements](#)
- [MIL-DTL-38999 Contacts, Tooling, Wire Sizes, Sealing Plugs](#)
- [Series II Polarization & Shell Keying](#)
- [Series II Panel Cut-Out Dimensions](#)
- [Series I & II Strain Reliefs](#)

MILITARY PART NUMBERING SYSTEM

MS27474

T

22

F

35

P

A

- Polarization (not required for normal)**
- Contact Style (P for Pin, S for Socket)**
- Insert Arrangement (Refer to MIL-C-38999 Insert Arrangements)**
- Finish:**
 - B= Aluminum, olive drab cadmium over nickel -65 C to +175C**
 - C= Aluminum, Anodic (Non-Conductive) -65 C to +200 C**
 - F= Aluminum, electroless nickel, -65 C to +200 C**
- Shell Size: (even numbers only, 8 thru 24)**
- Class:**
 - T= Environmental with accessory threads and teeth (with exception of box mount version)**
 - E= Environmental (box mount versions only)**
- MS Number**
 - MS27472= wall mount flange receptacle**
 - MS27473= standard plug**
 - MS27474= jam nut mount receptacle**
 - MS27499= box mount receptacle**
 - MS27508= box mount flange receptacle**
 - MS27497= back panel wall mount receptacle**
 - MS27484= RFI Plug**
 - MS27513= box mount flange long grommet receptacle**

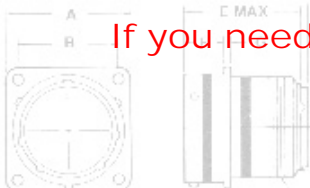


For pricing and availability, please fill out our RFO form



10	954	719	685	120	1.215	446	062	087	58-24 UNEF
12	1.047	812	864	120	1.215	446	062	087	3/4-20 UNEF
14	1.141	906	969	120	1.215	446	062	087	7/8-20 UNEF
16	1.234	1.002	1.216	120	1.215	446	062	087	1 1/16-18 UNF
20	1.443	1.150	1.365	120	1.275	522	094	212	1 3/16-18 UNF
22	1.578	1.259	1.486	120	1.275	522	094	212	1 5/16-18 UNF
24	1.703	1.375	1.615	127	1.275	522	094	212	1 7/16-18 UNF

10	954	719
12	1.047	812
14	1.141	906
16	1.234	1.002
20	1.443	1.150
22	1.578	1.259
24	1.703	1.375

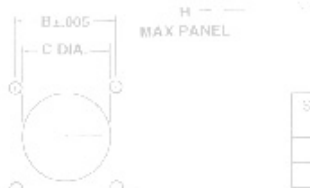


If you need any other information, please [E-Mail aecs@aecsinc.com](mailto:aecs@aecsinc.com)



phone (703) 425-3815 fax (703) 425-3814

We look forward to hearing from you!

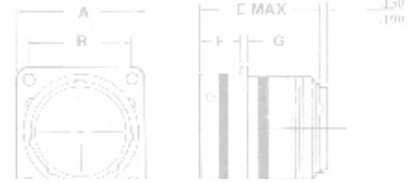


SHELL SIZE	A MAX	B ±.005	C ±.010	D DIA	UNF	JNEF	JNE-
8	828	564	5				
10	954	719	5				
12	1.047	812	5				
14	1.141	906	969	120	1.215	446	062 087 7/8-20 JNEF
16	1.234	1.002	1.216	120	1.215	446	062 087 1 1/16-18 UNF
20	1.443	1.150	1.365	120	1.275	522	094 212 1 3/16-18 UNF
22	1.578	1.259	1.486	120	1.275	522	094 212 1 5/16-18 UNF
24	1.703	1.375	1.615	127	1.275	522	094 212 1 7/16-18 UNF

A Woman Owned Small Business, CAGE Code 07BG6

	INCH	MM	INCH	MM	INCH	MM	INCH	MM	INCH	MM	INCH	MM	INCH	MM	INCH	MM	INCH	MM
8	0.827	21.00	0.594	15.09	.120	3.05	.312	7.92	.474	12.04	.322	8.18	.069	1.75	.250	6.35	.447	11.35
10	0.953	24.2	0.719	18.26	.120	3.05	.312	7.92	.591	15.01	.322	8.18	.069	1.75	.250	6.35	.447	11.35
12	1.047	26.6	0.812	20.62	.120	3.05	.312	7.92	.751	19.08	.322	8.18	.069	1.75	.250	6.35	.447	11.35
14	1.141	28.98	0.906	23.01	.120	3.05	.312	7.92	.876	22.25	.322	8.18	.069	1.75	.250	6.35	.447	11.35
16	1.234	31.34	0.969	24.61	.120	3.05	.312	7.92	1.001	25.43	.322	8.18	.069	1.75	.250	6.35	.447	11.35
18	1.327	33.7	1.062	26.97	.120	3.05	.312	7.92	1.126	28.60	.322	8.18	.069	1.75	.250	6.35	.447	11.35
20	1.453	36.9	1.156	29.36	.120	3.05	.312	7.92	1.251	31.78	.322	8.18	.069	1.75	.250	6.35	.447	11.35
22	1.578	40.08	1.25	31.75	.120	3.05	.312	7.92	1.376	34.95	.322	8.18	.069	1.75	.250	6.35	.447	11.35
24	1.703	43.26	1.375	34.93	.147	3.73	.312	7.92	1.501	38.13	.322	8.18	.069	1.75	.250	6.35	.447	11.35

- [MIL-DTL-38999 Insert and Contact Identification](#)
- [MIL-DTL-38999 Insert Arrangements](#)
- [MIL-DTL-38999 Contacts, Tooling, Wire Sizes, Sealing Plugs](#)
- [Series II Polarization & Shell Keying](#)
- [Series II Panel Cut-Out Dimensions](#)
- [Series I & II Strain Reliefs](#)



MILITARY PART NUMBERING SYSTEM

MS27499 T 18 F 35 P B

- Polarization** (not required for normal)
- Contact Style** (P for Pin, S for Socket)
- Insert Arrangement** (Refer to MIL-C-38999 Insert Arrangements)
- Finish:**
 - B= Aluminum, olive drab cadmium over nickel -65 C to +175C**
 - C= Aluminum, Anodic (Non-Conductive) -65 C to +200 C**
 - F= Aluminum, electroless nickel, -65 C to +200 C**
- Shell Size:** (even numbers only, 8 thru 24)
- Class:**
 - T= Environmental with accessory threads and teeth (with exception of box mount version)**
 - E= Environmental (box mount versions only)**
- MS Number**
 - MS27472= wall mount flange receptacle**
 - MS27473= standard plug**
 - MS27474= jam nut mount receptacle**
 - MS27499= box mount receptacle**
 - MS27508= box mount flange receptacle**
 - MS27497= back panel wall mount receptacle**
 - MS27484= RFI Plug**
 - MS27513= box mount flange long grommet receptacle**



For pricing and availability, please fill out our RFQ form



8	820	554	568	120	1.275	445	652	687	1.5/16-18 UNF
10	954	719	685	120	1.275	446	652	687	5/8-24 UNF
12	1.047	812	664	120	1.275	446	652	687	3/4-20 UNF
14	1.141	866	1.115	120	1.275	446	652	687	1.25 UNF
16	1.234	1.002	1.236	120	1.275	446	652	687	1 1/16-18 UNF
20	1.453	1.150	1.365	120	1.275	446	652	687	1 3/16-18 UNF
22	1.578	1.450	1.485	120	1.275	446	652	687	1 5/16-18 UNF
24	1.703	1.375	1.615	120	1.275	446	652	687	1 7/16-18 UNF



8	820
10	954
12	1.047
14	1.141
16	1.234
18	1.328
20	1.453
22	1.578
24	1.703

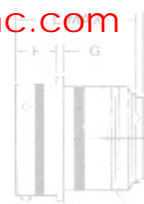


If you need any other information, please **E-Mail** aecs@aecsinc.com



phone (703) 425-3815 fax (703) 425-3814

We look forward to hearing from you!





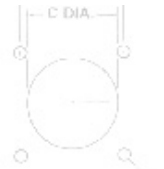
PANEL CUTOUT

D DIA.
4 HOLES

SHELL SIZE	A	B
8	820	554
10	954	719
12	1047	812
14	1141	906
16	1234	1000
18	1328	1094
20	1422	1188
22	1516	1282
24	1610	1376



J
E40-2A
20 UNF
14 UNEF
3/4-20 UNEF
28-20 UNF
1-20 UNEF
1 1/16-18 UNF
1 5/16-18 UNF
1 7/16-18 UNF



PANEL CUTOUT

D DIA.
4 HOLES

SHELL SIZE	A
8	820
10	954
12	1047
14	1141
16	1234
18	1328
20	1422
22	1516
24	1610

A Woman Owned Small Business, CAGE Code 07BG6

Copyright © 2008 Allen Electric Connector Sales, Inc. All Rights Reserved.



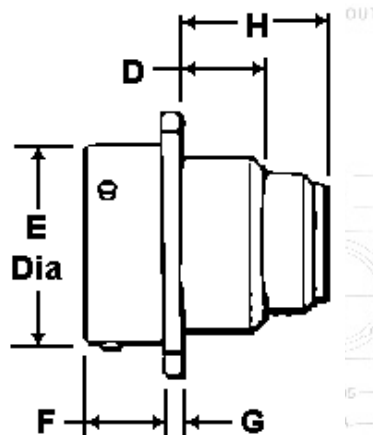
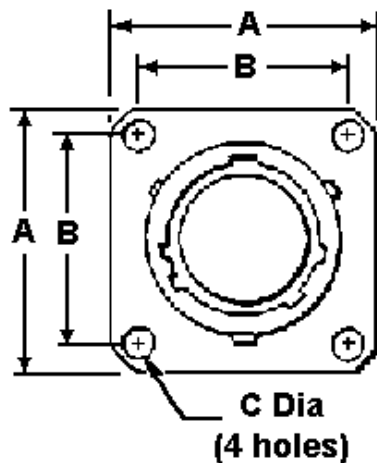
Allen Electric Connector Sales, Inc.



MS27513 SERIES II LONG GROMMET BOX MOUNT FLANGE RECEPTACLE

R	.628	.564	.568	.120	1.215	.446	.052	.087	5/32 UNF
10	.954	.719	.685	.120	1.215	.446	.052	.087	5/32 UNEF
12	1.047	.812	.664	.120	1.215	.446	.052	.087	3/4-20 UNEF

A	MAX
R	.628
10	.954
12	1.047
14	1.141
16	1.234
18	1.327
20	1.453
22	1.578
24	1.703



SHELL SIZE	A MAX		B NOMINAL		C NOM DIA		D MAX		E MAX DIA		F MAX		G MAX		H MAX	
	INCH	MM	INCH	MM	INCH	MM	INCH	MM	INCH	MM	INCH	MM	INCH	MM	INCH	MM
8	.827	21.00	.594	15.09	.120	3.05	.312	7.92	.474	12.04	.322	8.18	.069	13.11	.516	13.11
10	.953	24.20	.719	18.26	.120	3.05	.312	7.92	.591	15.01	.322	8.18	.069	13.11	.516	13.11
12	1.047	26.60	.812	20.62	.120	3.05	.312	7.92	.751	19.08	.322	8.18	.069	13.11	.516	13.11
14	1.141	28.58	.906	23.01	.120	3.05	.312	7.92	.876	22.25	.322	8.18	.069	13.11	.516	13.11
16	1.234	31.34	.969	24.61	.120	3.05	.312	7.92	1.001	25.43	.322	8.18	.069	13.11	.516	13.11
18	1.327	33.70	1.062	26.97	.120	3.05	.312	7.92	1.126	28.60	.322	8.18	.069	13.11	.516	13.11
20	1.453	36.90	1.156	29.36	.120	3.05	.312	7.92	1.251	31.78	.322	8.18	.069	13.11	.516	13.11
22	1.578	40.08	1.250	31.75	.120	3.05	.312	7.92	1.376	34.95	.322	8.18	.069	13.11	.516	13.11
24	1.703	43.26	1.375	34.93	.147	3.73	.312	7.92	1.501	38.13	.322	8.18	.069	13.11	.516	13.11

[MIL-DTL-38999 Insert and Contact Identification](#)

[MIL-DTL-38999 Insert Arrangements](#)

[MIL-DTL-38999 Contacts, Tooling, Wire Sizes, Sealing Plugs](#)

[Series II Polarization & Shell Keying](#)

[Series II Panel Cut-Out Dimensions](#)

[Series I & II Strain Reliefs](#)

MILITARY PART NUMBERING SYSTEM

MS27513

T

18

F

35

S

C

- Polarization (not required for normal)
- Contact Style (P for Pin, S for Socket)
- Insert Arrangement (Refer to MIL-C-38999 Insert Arrangements)
- Finish:
 - B= Aluminum, olive drab cadmium over nickel -65 C to +175C
 - C= Aluminum, Anodic (Non-Conductive) -65 C to +200 C
 - F= Aluminum, electroless nickel, -65 C to +200 C
- Shell Size: (even numbers only, 8 thru 24)
- Class:
 - T= Environmental with accessory threads and teeth (with exception of box mount version)
 - E= Environmental (box mount versions only)
- MS Number
 - MS27472= wall mount flange receptacle
 - MS27473= standard plug
 - MS27474= jam nut mount receptacle
 - MS27499= box mount receptacle
 - MS27508= box mount flange receptacle
 - MS27497= back panel wall mount receptacle
 - MS27484= RFI Plug
 - MS27513= box mount flange long grommet receptacle

For pricing and availability, please fill out our RFQ form



If you need any other information, please [E-Mail aecs@aecsinc.com](mailto:aecs@aecsinc.com)

phone (703) 425-3815 fax (703) 425-3814

We look forward to hearing from you!

SHELL SIZE	A	B	C	D	E	G	H
	MAX	±.005	±.005	±.005	MAX	±.015	±.010
8	.828	.564	.598	.120	1.215	.446	.087
10	1.047	.672	.664	.120	1.215	.446	.087
12	1.147	.906	.869	.120	1.215	.446	.087
14	1.247	1.150	1.113	.120	1.215	.446	.087
16	1.347	1.394	1.357	.120	1.275	.522	.094
18	1.447	1.638	1.601	.120	1.275	.522	.094
20	1.547	1.882	1.845	.120	1.275	.522	.094
22	1.647	2.126	2.089	.120	1.275	.522	.094
24	1.747	2.370	2.333	.120	1.275	.522	.094



A Woman Owned Small Business, CAGE Code 07BG6

Copyright © 2008 Allen Electric Connector Sales, Inc. All Rights Reserved.

