



**Allen Electric  
Connector Sales, inc.**

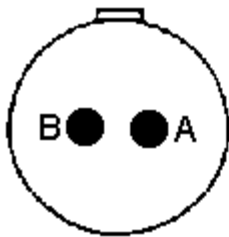


**MIL-DTL-26482 TYPE REAR RELEASE PLUGS**

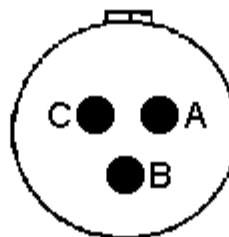
**(INTERMATEABLE WITH MIL-DTL-26482 SOLDER PIN RECEPTACLES)**

SHELL SIZE	A	B	C	D	E	F	G	H	J
6	1.047	0.105	0.105	0.105	0.105	0.105	0.105	0.105	0.105
8	1.143	0.105	0.105	0.105	0.105	0.105	0.105	0.105	0.105
10	1.239	0.105	0.105	0.105	0.105	0.105	0.105	0.105	0.105
12	1.335	0.105	0.105	0.105	0.105	0.105	0.105	0.105	0.105
14	1.431	0.105	0.105	0.105	0.105	0.105	0.105	0.105	0.105
16	1.527	0.105	0.105	0.105	0.105	0.105	0.105	0.105	0.105
18	1.623	0.105	0.105	0.105	0.105	0.105	0.105	0.105	0.105
20	1.719	0.105	0.105	0.105	0.105	0.105	0.105	0.105	0.105
22	1.815	0.105	0.105	0.105	0.105	0.105	0.105	0.105	0.105
24	1.911	0.105	0.105	0.105	0.105	0.105	0.105	0.105	0.105

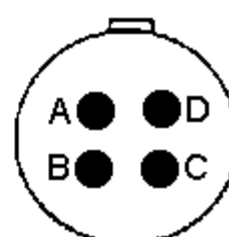
**SPECIALS**



**0802**



**0803**



**0804**

The three insert arrangement layouts shown are identical to the MIL-DTL-26482 Series II, but are not qualified to the specification. The shell configuration has been slightly altered to allow these rear release, crimp contacts plugs to intermate with the applicable MIL-DTL-26482 Series I solder pin receptacles. The special design originated for NASA and is used by various commercial aircraft avionics and payload equipment applications. Their #20 gauge pin and socket contacts are not qualified to the MIL-C-39029 specification, but use the same crimp tooling, insertion and removal tools.

Size 20 Contacts	Crimp Tool	Turret	Insertion/Extraction Tool
Socket: AE 5091-022-2020 Pin: AE 5291-022-2020	M22520/1-01 or M22520/2-01	M22520/1-02 or M22520/2-02	M81969/14-01

For pricing and availability, please fill out our RFQ form



If you need any other information, please [aecs@aecsinc.com](mailto:aecs@aecsinc.com)

18	1.328	1.062	1.235	.20	1.215	.446	.062	.087	1/8 UNF
20	1.443	1.166	1.363	.20	1.275	.522	.094	.094	1/8 UNF
22	1.578	1.290	1.485	.20	1.275	.522	.094	.094	1/8 UNF
24	1.703	1.375	1.615	.27	1.275	.504	.094	.094	1/8 UNF



phone (703) 425-3815 fax (703) 425-3814

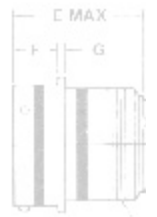
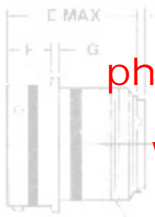
We look forward to hearing from you!



SHELL SIZE	A MAX	B ±.005	C ±.005	D DIA	E DIA	F DIA	G MAX	H MAX	J THREAD
8	.828	.554	.568	.120	1.215	.446	.052	.087	1/2-20 UNF
12	1.047	.812	.824	.120	1.215	.446	.062	.087	3/4-20 UNF
14	1.141	.906	.969	.120	1.215	.446	.062	.087	7/8-20 UNF
18	1.328	1.062	1.235	.20	1.215	.446	.062	.087	1 1/16-18 UNF
20	1.443	1.166	1.363	.20	1.275	.522	.094	.094	1 1/8-18 UNF
22	1.578	1.290	1.485	.20	1.275	.522	.094	.094	1 1/8-18 UNF
24	1.703	1.375	1.615	.27	1.275	.504	.094	.094	1 1/8-18 UNF

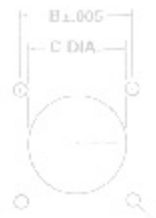
A Woman Owned Small Business, CAGE Code 07BG6

Copyright © 2008 Allen Electric Connector Sales, Inc. All Rights Reserved.



H MAX PANEL

J THREAD



H MAX PANEL

PANEL CUTOUT

D DIA 4 HOLES

PANEL CUTOUT

D DIA 4 HOLES