

**Allen Electric  
Connector Sales, Inc.**



TM



H  
MAX PANEL

## MIL-DTL-26482 SERIES II INSERT ARRANGEMENTS

Insert arrangement numbers are made by combining shell size (first two numbers) and the insert arrangement number (last two numbers). For example, a MS3476W14-12P would be shell size 14 with a insert of 12 for a 1412 insert arrangement. Insert arrangements are shown in numerical order by shell size and number of contacts in each shell size.

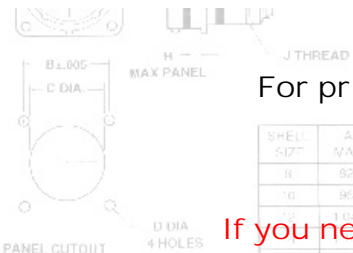
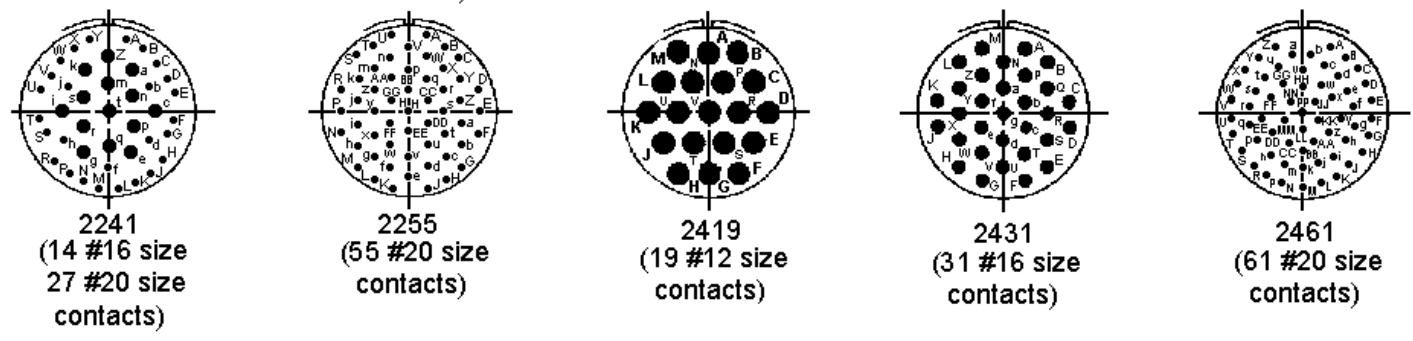
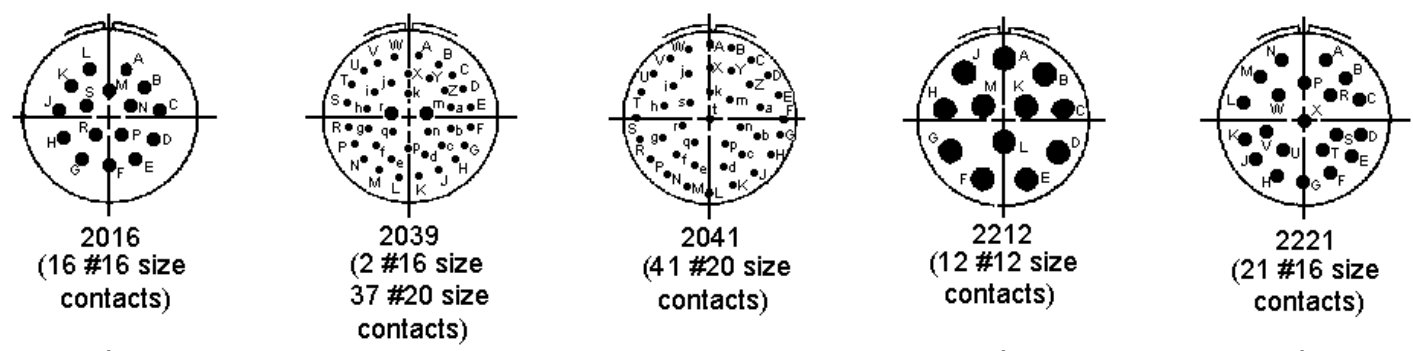
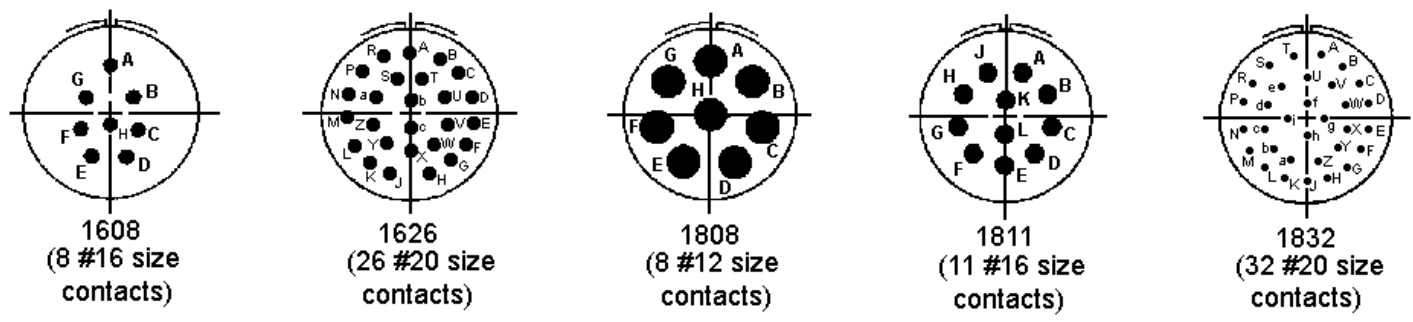
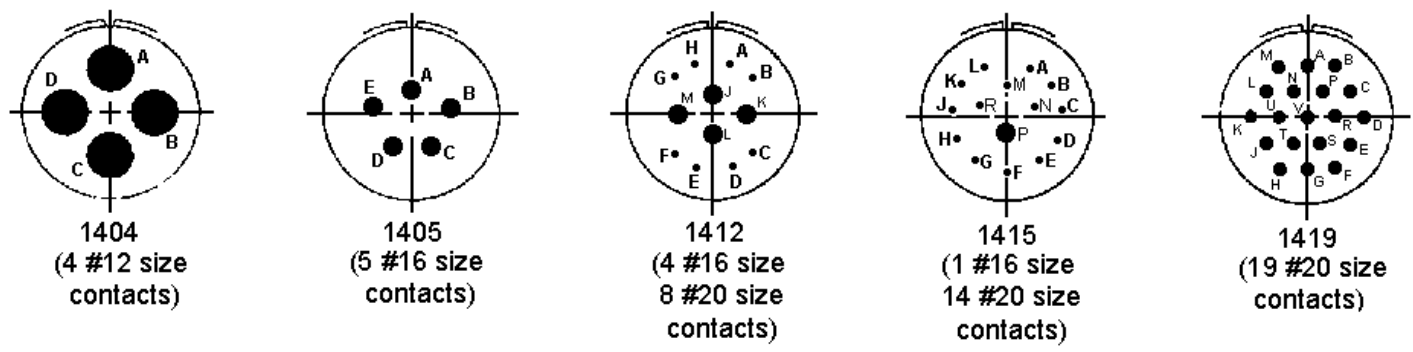
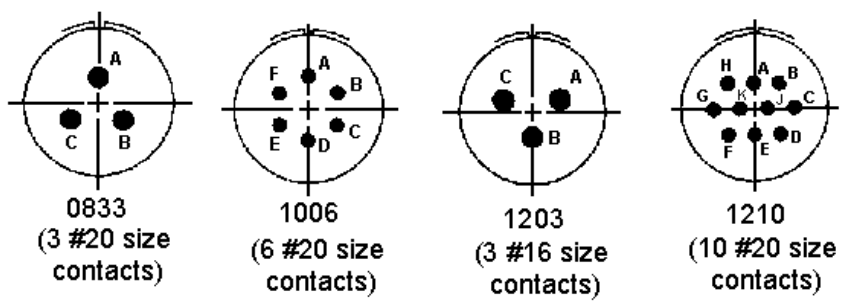
SHELL SIZE	A MAX	B ±.005	C ±.005	D ±.005	E MAX	F -0° ±	G +0.10	H MAX	J THREAD 2A
14	1.234	.968	1.115	.720	1.215	.446	.002	.587	1.116-18 UNF
18	1.328	1.062	1.235	.720	1.215	.446	.002	.587	1.116-18 UNF



H  
MAX PANEL

J THREAD

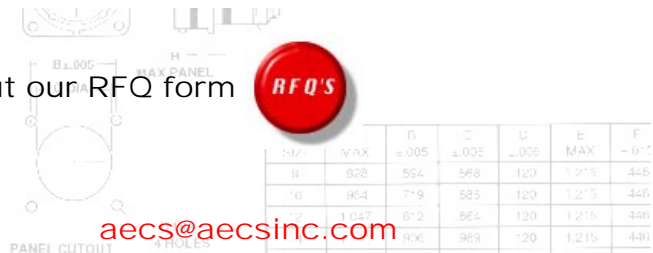
SHELL SIZE	A MAX	B ±.005	C ±.005	D ±.005	E MAX	F -0° ±
14	1.234	.968	1.115	.720	1.215	.446
18	1.328	1.062	1.235	.720	1.215	.446



For pricing and availability, please fill out our RFQ form



SHELL SIZE	A	B	C	D	E	F	G	H	J
MAX	±.005	±.005	±.005	MAX	±.010	±.010	MAX	TH-LEAD DIA	
B	520	554	568	120	121.5	445	552	657	1/2 20 UNF
D	954	719	585	120	121.5	445	552	657	1/2 20 UNF
H	1047	822	673	120	121.5	445	552	657	1/2 20 UNF
J	1234	958	1112	20	121.5	445	552	657	1/2 20 UNF



If you need any other information, please

[aecs@aecsinc.com](mailto:aecs@aecsinc.com)



SHELL SIZE	A	B	C	U	E	F
10	954	719	585	120	1.215	446
12	1047	812	584	120	1.215	446
14	1141	906	589	120	1.215	446
16	1234	998	1115	120	1.215	446
18	1328	1092	1235	120	1.215	446
20	1423	1186	1363	120	1.275	512
22	1518	1280	1485	120	1.275	512
24	1703	1375	1615	147	1.275	512



SHELL SIZE	A	B	C	U	E	F
10	954	719	585	120	1.215	446
12	1047	812	584	120	1.215	446
14	1141	906	589	120	1.215	446
16	1234	998	1115	120	1.215	446
18	1328	1092	1235	120	1.215	446
20	1423	1186	1363	120	1.275	512
22	1518	1280	1485	120	1.275	512
24	1703	1375	1615	147	1.275	512

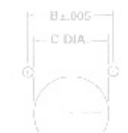
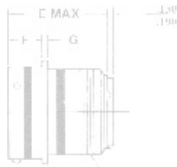
phone (703) 425-3815 fax (703) 425-3814

We look forward to hearing from you!

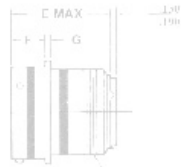


A Woman Owned Small Business, CAGE Code 07BG6

Copyright © 2008 Allen Electric Connector Sales, Inc. All Rights Reserved.



SHELL SIZE	A	B	C	U	E	F
10	954	719	585	120	1.215	446
12	1047	812	584	120	1.215	446
14	1141	906	589	120	1.215	446
16	1234	998	1115	120	1.215	446
18	1328	1092	1235	120	1.215	446
20	1423	1186	1363	120	1.275	512
22	1518	1280	1485	120	1.275	512
24	1703	1375	1615	147	1.275	512



SHELL SIZE	A	B	C	U	E	F
10	954	719	585	120	1.215	446
12	1047	812	584	120	1.215	446
14	1141	906	589	120	1.215	446
16	1234	998	1115	120	1.215	446
18	1328	1092	1235	120	1.215	446
20	1423	1186	1363	120	1.275	512
22	1518	1280	1485	120	1.275	512
24	1703	1375	1615	147	1.275	512